

# CAMRA Bromley Branch

## e-Newsletter

## February 2022



### In this issue:

#### [Welcome to the February e-Newsletter](#)

The Editor looks forward to the months ahead.

#### [Branch Calendar](#)

A variety of social events are planned for February.

#### [Bromley CAMRA AGM, 2022](#)

More information about the Bromley Branch AGM, and vacancies on the Committee.

#### [Beer Festival Update](#)

The latest news about Beckenham Beer & Cider festival.

#### [PotY/CotY 2022 & GBG 2023](#)

An update on the 2022 Bromley CAMRA Pub & Club of the Year Award and selection of pubs and clubs for the next issue of the Good Beer Guide.

#### [GBG 2022. Featured Pub of the Month](#)

This month we look at Bromley's first micropub, the One Inn the Wood in Petts Wood.

#### [A Micropub Day Out](#)

A branch visit to 3 micropubs on the northeast borders of London.

#### [How Green Is Your Pint?](#)

A report on the work of CAMRA's Environmental Working Group.

#### [Pub, Club & Brewery News](#)

Some news from Chatterton Rd (BR2) and Orpington.

#### [CAMRA News](#)

The Branch Secretary runs through some of the news from CAMRA.

#### [Inclusivity, Diversity and Equality Review](#)

CAMRA wants to hear your views.

#### [The Quiz](#)

The February quiz is on the theme of entertainment.



The return of *Meet the Brewer* events



Featured GBG featured pub of the month



Branch socials



The Bromley Branch e-Newsletter is published every month, on approx. the first day of the month. Members who have 'opted in' to receive emails from the branch will receive an email to notify them when each newsletter is available to download from the Branch Website.

## Welcome to the February 2022 e-Newsletter

This month we are bringing you a 17-page e-Newsletter, our largest so far. We do hope that you find something of interest to you.

January is now behind us, the days are getting longer, and there is a lot to look forward to in the coming months. Hopefully, we are now past the worst of the Covid-related problems and, during 2022, we might look to life returning closer to what we used to call 'normal'. Your branch Committee has been working hard to ensure that there will be plenty to keep CAMRA members busy this year.



Some of the content of this e-Newsletter is about recent branch activities such as the selection of entries for the 2023 Good Beer Guide and nomination and judging for the 2022 Club and Pub of the Year. There is also another 'GBG featured Pub of the Month', plus news about future branch social events, the branch AGM, and Beckenham Beer & Cider Festival.

I hope to see you soon in one of Bromley's many excellent pubs and clubs. (And please submit a [beer score](#) for your beers whilst you are there!)

*Bob Keaveney, Editor and Beer Score Coordinator*



### Good Beer Guide 2022 is now Sold Out!

However, have you tried the **Good Beer Guide App**?

The GBG App is available as a free download, so you why not try it out?

The free version gives you access to some GBG data, but the full version costs only **£4.99** per year.

Use it to find Good Beer Guide pubs, other pubs (directly from WhatPub data) and to submit your beer scores.

[Click here for more information](#)



*This is an actual screen shot*

## Important dates for your diary

Saturday 19<sup>th</sup> March Bromley CAMRA [Annual General Meeting](#)

Thursday 28<sup>th</sup> July to Saturday 30<sup>th</sup> July [Beckenham Beer & Cider Festival](#)

## Branch Calendar, February 2022

### Tuesday 1<sup>st</sup>. Afternoon Social in Bromley

- 13.30. [Lock & Barrel](#), 18 London Road BR1 3QR
- 15.00. [Partridge](#), 194 High Street BR1 1HE.

### Wednesday 9<sup>th</sup>. An evening in West Wickham

- 18.30. [Wheatsheaf](#), 135 High Street BR4 0LU
- 19.30. [Real Ale Way](#), 75 Station Road BR4 0PX.

### Thursday 17<sup>th</sup>. Micropub social

A day out to the north-eastern borders of London to visit 3 excellent micropubs, including the 2021 *Greater London Pub of the Year*.

- 12.00. [Gidea Park Micropub](#), 236 Main Road, Gidea Park. RM2 5HA
- 14.00. [Hop Inn Micropub](#), 122 North Street, Hornchurch. RM11 1SU
- 16.00. [Upminster Taproom](#), 1b Sunnyside Gardens, Upminster RM14 3DT
- See [page 10](#) for more information, including details of recommended public travel options.

### Tuesday 22<sup>nd</sup>. Social & Committee Meeting(\*) in Downe

- 18.30. (Social) [George & Dragon](#), 26 High Street, Downe BR6 7UT;
- 19.30. (Meeting) [Queens Head](#), 25 High Street, Downe BR6 7US

### Monday 28<sup>th</sup>. Chislehurst Social.

- 19.00 [Cockpit](#), 4 Royal Parade, Chislehurst BR7 6NR



Full details of all events, including suggested public transport options, can be viewed on the branch website: <https://bromley.camra.org.uk/calendar/>

(\*) Members of Bromley CAMRA who are not on the committee are always welcome to attend committee meetings. Non-committee members planning to attend a meeting may request the Secretary [secretary@bromley.camra.org.uk](mailto:secretary@bromley.camra.org.uk) to prepare and print a pack of relevant committee papers to be made available for them at the meeting.

Photos, from top:  
Lock & Barrel, Partridge; Wheatsheaf; Hop  
Inn (Hornchurch); George & Dragon, Cockpit  
Real Ale Way; Queen's Head

All photos by Chris Crowther





# Bromley CAMRA Branch AGM, and Vacancies on the Branch Committee

This is a reminder that the Branch **Annual General Meeting** will take place at [Orpington Liberal Club](#) on **Saturday 19<sup>th</sup> March 2022**.

Members are asked to arrive by 2.45 pm, for a prompt 3.00 pm start.

As well as reviewing the branch's activities over the past year and looking at the future, a major event at the AGM will be the election of a new Branch Committee for the 2022-23 year.



The Committee hard at work. July 2021, in the upstairs room at the Chancery.

A Branch Committee is not a staid, antiquated object – it is a living body that exists to serve both its branch members and CAMRA campaign aims. However, Committee member's lives are not exempt from external changes and sometimes the need for them to follow other priorities means they can no longer offer their services as elected branch officers.

This should not be viewed as a bad thing; like any living organism, renewal and regeneration leads to a much stronger body. And so it is with your Bromley CAMRA Branch, as we are likely to have several key vacancies on the 2022-23 Committee that we hope you, as our dedicated members, will volunteer to fill.

The Committee vacancies are shown below with a short description and clickable links to further role information.

## **Branch Chair** ([Role summary](#) and [Role guidance](#))

- Could you be the person to enthuse branch members to participate in branch activities? As the Chair you'd lead the branch, helping to set its direction and encourage local CAMRA members to get involved and enjoy branch activities.

## **Branch Treasurer** ([Role summary](#) and [Role guidance](#))

- Are you good with numbers and want to help your local CAMRA Branch? As Treasurer you can use your abilities to keep the branch accounts up to date, help the branch run smoothly and acquire new skills. You will advise the branch about its finances, prepare for future AGMs and input into the Beer Festival business plan.

## **Pub Protection Officer** ([Role summary](#) and [Role guidance](#))

- Would you like to protect pubs in your area and campaign to keep them from change or closure? The purpose of the role is to protect pubs and significant pub heritage within the branch area and lead campaigns to save or protect threatened pubs.

## **Pubs Promotion & Awards Coordinator** ([Role summary](#) and [Role guidance](#))

- As Pub Promotions and Awards Co-ordinator you'd work with a team of volunteers keeping in contact with pubs and arranging pub awards. The role involves organising the *Pub of the Year* and *Club of the Year* awards and any seasonal presentations and special awards the branch wishes to make.

(Continues...)

### Public Affairs Contact ([Role summary](#) and [Role guidance](#))

- The purpose of the role is to engage with, lobby and persuade local Councillors, MPs and other political representatives within our branch boundaries to support CAMRA's local and national campaigns.

### BR3 Pub Contact ([Role summary](#) and [Role guidance](#))

- Do you fancy visiting some pubs or micropubs every now and then in your local area as our branch's contact for BR3? This part of Bromley covers Beckenham, Elmers End, Eden Park, Park Langley, and Clock House. Formerly known as the Area Representative, the purpose of the Pub Contact is to link with BR3 pubs, get to know the licensees and bar staff, provide CAMRA literature and collect information for the branch Committee.

### Branch Membership Secretary ([Role summary](#) and [Role guidance](#))

- *Although not likely to be a vacancy as such, this is a role that the present holder is willing to hand over if a suitable member feels they have the necessary skill set.*
- The role of the Membership Secretary is to recruit, welcome and retain CAMRA members, encouraging their participation in CAMRA activities, especially soon after they have joined. You would be responsible for the Branch membership database and liaise with CAMRA central membership officers. Full guidance and induction into the role would be given by the present post-holder, including a period of shadowing.

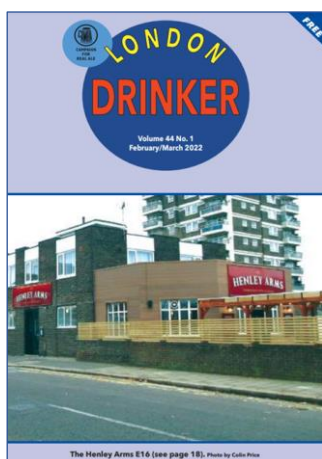


Charles Tucker chairing a meeting of the Committee

None of the above Committee vacancies are excessively time consuming and parts of the roles can be delegated amongst other Branch Officers as required. If you believe in CAMRA's wider aims, and if you want to play a larger part in supporting Bromley Area's great pubs, clubs, real ale and cider, please consider offering your services.

This is a unique opportunity for you to bring your ideas along, have your say, and really help shape our branch future. Like any volunteer organisation, CAMRA's main strength comes through the involvement of its members, especially those who are prepared to step-up and make that extra commitment of serving on a Branch Committee and you would be working with a team of friendly and committed people.

Please contact the current Branch Chair, [Charles Tucker](#), if you want more information or to arrange an informal chat about any of the roles. Meanwhile, here is the link to the [AGM page](#) on the Branch website where you can read more information and prospective volunteers can download a nomination form.

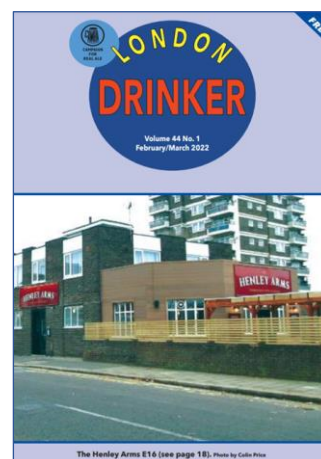


**The February / March issue of  
London Drinker  
is now available to view online  
or download.**

[View online](#)

[Download as a PDF](#)

Printed copies should be available in the usual pubs & clubs during the first week of February.



## Beer Festival Update

*Preparations continue for the planned return of Bromley Branch's beer & cider festival.*

The end of 'Plan B' measures in England on 27<sup>th</sup> January was a huge and welcome step for CAMRA Beer and Cider Festivals. It means we can now plan with full confidence that our July Festival will go ahead from the 28<sup>th</sup> to the 30<sup>th</sup>. The planning team are now concentrating on the business plan to get CAMRA approval in the next few weeks and as I write the beer and cider ordering teams are at work selecting your delicious pints.



Festival volunteer numbers have been steadily increasing and are now in the mid-20s, but we still need more hands to help share out the load. If you want to volunteer please complete the form at the link [here](#). If you want an email version or hard copy of the form, or have any questions or queries, contact the Festival Coordinator at [festival.coordinator@bromley.camra.org.uk](mailto:festival.coordinator@bromley.camra.org.uk) or phone 07906 053571. You will be able to choose what hours and days you work and during your shifts food

and drinks benefits will also be available. Grateful thanks to all those who have volunteered so far.

However, we are still short of the four first aiders we need to cover the festival. The qualification standard required is 'Emergency First Aid at Work'. This standard is recommended as the minimum level of training for persons in low-risk workplace environments and only requires a 6-hour course to qualify. If any members reading this want to go on a course to do these roles at the festival, do please get in touch. We will pay for your course and the qualification lasts for three years.

A big change for this festival will be the sale of advance tickets and beer tokens online. We want to minimise cash transactions where we can and want to get a better feel for the numbers attending to ensure we stay as Covid-secure as possible.

Meanwhile, keep watching the [branch web page](#) and the monthly e-Newsletters for updates as the festival planning progresses.

*Charles Tucker, Festival Coordinator*



Charles Tucker

### Beckenham Beer & Cider Festival, 28<sup>th</sup> to 30<sup>th</sup> July 2022

See the festival page on the [Branch website](#)

Volunteer [here](#)

All enquiries to the [Festival Coordinator](#)

*All you need is love...*  
and a  
CAMRA Gift Membership

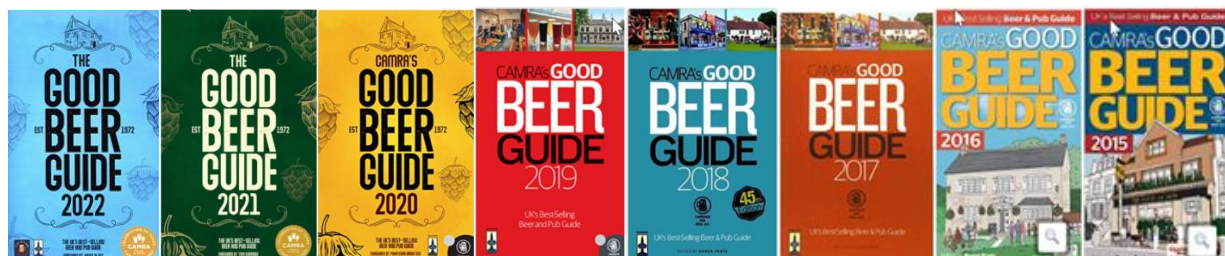


**Treat your Valentine today**



## Good Beer Guide and Pub & Club of the Year, Update

*A brief update about the selection of potential entries for the next issue of the Good Beer Guide, and the competition for the titles of 2022 Bromley Pub and Club of the Year.*



As reported in the last edition of the e-Newsletter, January was the month when Bromley Branch needed to start work on selecting which pubs/clubs will be recommended for inclusion in the next issue of the Good Beer Guide (GBG). In addition, January was also the start of the branch Pub and Club of the Year competition.

The GBG Selection meeting took place on 11<sup>th</sup> January in the (very) newly decorated garden room at the [Crown & Anchor](#) (*I think the paint was still wet*). A 'longlist' of 21 pubs, based on beer scoring during 2021, was presented for consideration by the members present at the meeting. Bromley's GBG allocation is only 10 entries, therefore members voted in a secret ballot for 10 venues, plus two reserves. As always, the names of the 10 venues will not be made public prior to the publication of the 2023 GBG in October. Incidentally, GBG 2023 will be the **50<sup>th</sup> edition** of CAMRA's flagship publication.

The Crown & Anchor had two beers from Bexley Brewery available on the evening, 'BOB' and Bursted Bitter; although by mid-evening, our members had managed to finish all of the Bursted.

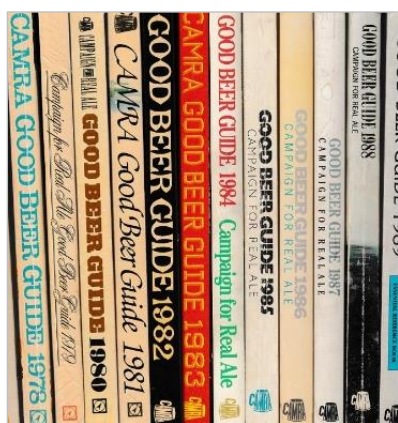


The closing date for nominations for **Pub and Club of the Year** was 18<sup>th</sup> January. A total of nine pubs and two clubs were nominated by members. The Branch Committee then selected five of the nine pubs to go forward for judging.

Judging of the pubs is now in progress, the winner and runner-up will be announced in early March.



The Branch Committee thanks all those members who nominated a pub and/or a club, and also those members who have volunteered to join the judging panel.



### Did you know?

The full history of Bromley's listings in all issues of the Good Beer Guide can be viewed on the Bromley CAMRA website

[Bromley in the Good Beer Guide](#)

*The first listing was in 1974, only one Bromley pub was included, the Bulls Head Hotel in Chislehurst.*



## Good Beer Guide 2022. Featured Pub of the Month

*There are nine Bromley pubs, and one club, listed in the 2022 Good Beer Guide. This month our BR5 Pub & Club Contact, Wendy Reynolds, writes about the One Inn the Wood.*

In 2005, a new type of drinking venue opened for the first time in deepest Kent. This was the Butchers Arms in Herne and was Britain's first micropub. It is from this idea that all other micropubs have sprung. Micropubs differ from mainstream pubs; conversation is king with seating that encourages strangers to talk to each other, there are no TVs or fruit machines, and normally only bar snacks are available. Finally there is the beer, which is cask and probably relatively local.



It was in May 2014 when the first micropub opened in the Bromley Branch area. [One Inn The Wood](#) in Petts Wood was the brainchild of Barry and Sarah Bridge. Barry, after 27 years working as a money broker, decided to take the plunge and, as they say, the rest is history. Barry wasn't brand new to the world of pubs, as his grandparents ran a pub, but it was still a big risk.



The pub is fitted out with high tables and stools that encourage conversation, food is snacks and there is a 'fine' for use of a mobile phone. The left-hand side of the pub is dominated by a woodland scene, and this all fits in nicely with the name of the area, and the name of the pub, which by the way means 'paying for a pint before the customer wants it'. Then there is the beer – Barry likes to have a varied selection that covers all the styles; this normally includes one dark beer. As you can imagine, the beer is kept very well and in good condition. If you aren't sure what you want, tasters can be had.

During the various periods of lockdown, the One Inn the Wood became an off licence, and the range of bottles and cans available expanded rapidly. As well as offering take-outs (when permitted by Covid regulations) they also ran a delivery service within a 3-mile radius of the pub.

In 2021 Bromley Council agreed to the temporary conversion of two of the nearby street parking bays to extend the outside seating area. This proved to be a welcome addition and combines a variety of seating, which even included two deck chairs that become particular popular. The permission for the use of the parking bays has now been extended until September 2022.



All photos this page by Chris Crowther

*(Continues...)*



Most micropubs have a strong community feel and One Inn the Wood is no exception. Over the years, they have raised money for the Royal British Legion, Kent Air Ambulance and St Christopher's Hospice. They recently ran a raffle to help raise money for a defibrillator in Station Square. During the third lockdown they coordinated the collection of unwanted laptops and tablets, which were then refurbished and donated to local schools. A total of 125 devices were donated. (see page 7 of the [May 2021 e-Newsletter](#)).

The One Inn The Wood has won a hatful of awards too. It was the Bromley Branch Pub of the Year for 2015 and 2016. It was also Greater London Regional Pub of the Year in 2015. It has also been the Runner-up Bromley Pub of the Year in 2017, 2018 and 2020/21.

It has also been a regular entry in the Good Beer Guide since 2016 and has featured in other pub-related books, including Des De Moor's *London's Best Beer Pubs and Bars*, where Des lists it as one of London's top five micropubs.



Sarah (L) & Barry at the Petts Wood 10k charity event in October 2021

Photo by One Inn The Wood



Chris Crowther



**One Inn The Wood**  
209 Petts Wood Road  
Petts Wood. BR5 1LA  
07799 535982

Read more about the One Inn the Wood:

- [WhatPub](#)
- [Facebook](#)
- [Twitter](#)

Another of Bromley's Good Beer Guide pubs (or a club) will be featured in the March edition of the e-Newsletter.

# Three Micropubs in East London

*Until on a few years ago, the Havering area of East London had few options available for real ale drinkers, however it now boasts three micropubs.*

On **Thursday 17<sup>th</sup> February**, Bromley CAMRA will be going to London's most easterly borough, to visit three excellent micropubs, one of which won the 2021 CAMRA Greater London Regional Awards for both Pub of the Year (PotY) and Cider Pub of the Year.

## 1. Gidea Park Micropub

Opened in 2017 in a former accountant's office.  
Local branch PotY 2019 & 2020.

Five to eight Real Ales are served from a wide variety of microbreweries, straight from the casks in the cooled ground floor cellar, with an additional six to eight real ales from Keykeg taps. Many real ciders are also available.

Nearest rail station: Gidea Park.

[WhatPub](#)



## 2. Hop Inn Micropub

Opened in December 2019, converted from a skin clinic.  
CAMRA Greater London Regional PotY 2021 & Regional Cider PotY 2021.

Up to five cask-conditioned real ales are served direct from the cooled cabinets behind the bar, together with two KeyKeg beers, plus real ciders and perry.

Nearest rail Station: Emerson Park.

[WhatPub](#)



## 3. Upminster Taproom

Opened in 2015, converted from a former office.  
Local branch PotY 2017 & 2018.

Up to 7 changing beers, with an emphasis on Essex microbreweries. Beers are served straight from the casks in the cool room, which is visible through a large window in the bar area.

Nearest Rail/Underground station: Upminster.

[WhatPub](#)



Members are welcome to attend for the whole day, or just for one or two of the pubs.

All three pubs are listed in the 2022 Good Beer Guide.



Photographs from WhatPub, with thanks to South West Essex CAMRA

## Suggested Travel Arrangements

- All three micropubs are in TfL Zone 6.
- To join us for the start of the social, you will need to catch **11:19** train from Liverpool St (*destination Shenfield, probably platform 17*), to Gidea Park Station. The Social Secretary will be at Liverpool St from 11:00. Travel between the 3 pubs will be by public transport.
- For more detailed travel information, please follow [this link to the Branch Calendar](#). More information, including a local map, will be available on the day.

## How Green is Your Pint?

*Your Branch Chair is a member of CAMRA's member of the Environment Working Group.*

As the planet moves towards record temperatures and greenhouse gases spiral, CAMRA has launched a new campaign; it is called '**Drink Greener**'. It began last year after a hard look at how the beer and cider industry impacts on the environment. It started during the lockdowns and restrictions and in the run up to the COP26 summit last November. As part of this review, CAMRA formed the '**Environmental Working Group**', which consists of CAMRA members chosen for their knowledge and expertise in environmental issues. They have been analysing the practices within the ale and cider industry and its effects on our wider climate.

Innovative industry solutions are already in place and are increasing, while others have been around for a long time. Brewers have long been donating their used, fermented grains to farmers to use as animal feed. Used yeast ends up as Marmite! Ways to use less water and heat in the brewing and fermenting process are also being adopted. All this is reducing their carbon footprint, but there is still some way to go before they can be truly carbon-neutral or even carbon-negative. So, for now, the emphasis is on the 'er' in 'Greener', rather than drastic overnight changes.

One thing the Environmental Working Group wants to celebrate, is the 'green' practice of *re-use* already happening in bars and pubs everywhere. And it has been happening unnoticed for centuries!

What is it that's so special about the pub? Let's compare buying a pint of beer or cider in the supermarket with buying a pint of beer or cider in the pub. If you buy a bottle of beer, you will pour it into a glass (probably), and pop the empty bottle, (hopefully) into the recycle bin. You've done your bit for the environment, right?

The statistics and logistics that surround recycling are complex and varying. It is difficult to understand how much glass is actually being recycled. Glass is infinitely recyclable, but according to British Glass only around 50% of household glass gets made back into useable form. The other half is recycled as aggregate, incinerated, or ends up in landfill.

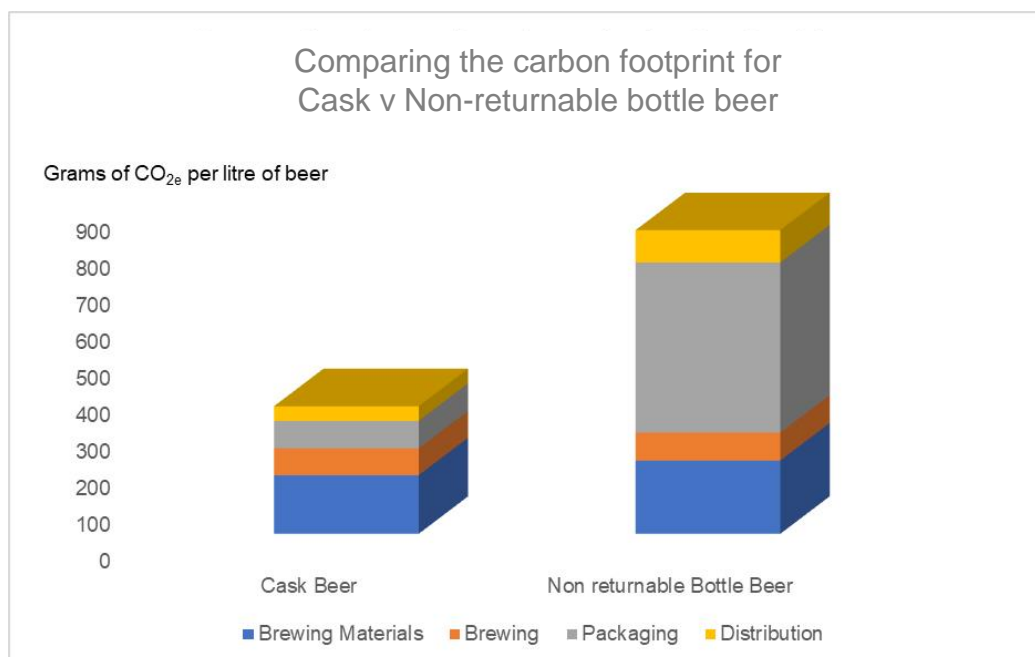
Let's imagine you are walking into your local pub, firstly you would be enjoying the pub's warmth and light which is benefitting multiple people. Then if you were having a real ale or real cider, it will be served to you in a reusable vessel, (a glass), straight from the cask, cutting out the '*middle bottle*'. The empty casks are taken back to the brewery to be washed, sterilised and reused for the next batch of beer, which will find its way back to the pubs and clubs.

The process starts all over again, creating a closed loop where the emphasis is on re-use rather than recycle. The pub's waste bottles will almost definitely end up being recycled, as their recycling rubbish collection has a lower charge than their rubbish destined for landfill, so it makes sense for the pubs to sort their rubbish out properly

*(Continues...)*







The process starts all over again, creating a closed loop where the emphasis is on re-use rather than recycle. The pub's waste bottles will almost definitely end up being recycled, as their recycling rubbish collection has a lower charge than their rubbish destined for landfill, so it makes sense for the pubs to sort their rubbish out properly.

Producers of real cider and perry have a lot to be proud about too, as those drinks are usually made in the time-honoured way. The process of cold pressing fruit such as apples and pears and letting the juice ferment naturally is centuries old and incredibly good for the environment. So good, in fact, that there is a government funded scheme to create and conserve community orchards. The benefits are tangible as humans maintaining them can enjoy the beauty of being outside connecting with nature, tradition and provenance while the birds, bees, butterflies and other insects revel in the flowers and fruit.

Current generations have found themselves living in a time where the planet is warming, and the potential consequences are dire. How we live our lives has changed dramatically in the past two or three decades; will we be able to halt the damage that we have caused? We have to believe that we can, and that the earth *can* heal, or we might as well all give up. Re-using to eliminate waste, rather than creating waste then justifying it by recycling it, has surely got to be the way. Remember the milkman? He was once buzzing around in an electric vehicle long before they became fashionable, and giving us milk in reusable bottles. Cost must have been the main reason for sacrificing convenience in favour of those plastic cartons, which are recyclable, but non-bio-degradable and not reusable in an industrial sense. The milkman hasn't completely disappeared yet, you can still catch him, or her!



So, you see, you really **can** help save the planet just by going to the pub. How good is that? We love beer, we love cider, and we love our planet. It's amazing. After all, as they say, it's the only planet with beer on it (as far as we know!).

*Charles Tucker, Branch Chair and member of the  
Environment Working Group*

## Pub, Club, Brewery News

*A round-up of news from some of Bromley Branch's Area Pub/Club Contacts and Brewery Liaison Officers.*

### Bromley, BR2

#### *Another Real Ale Way?*

An application for 'Change of Use' has been submitted to Bromley Planning Dept to convert the former electrical repair shop at 6 Chatterton Road BR2 into another



*Real Ale Way* micropub. If approved, this would be the third outlet in Bromley for this family-run company. For more information, [follow this link](#) and search for reference 21/03870/FULL1.

The application for Licence for the premises was approved in December 2021.

### Orpington, BR6

#### *The welcome return of a Meet The Brewer event!*

Orpington Liberal Club's 'Meet the Brewers' evening with Tonbridge Brewery in January, was well attended, with about 40 to 50 people. It had originally been scheduled to happen early in 2020, but then 'you know what' happened! All present enjoyed the 'tap takeover' and hearing how the brewery has adapted to the business changes brought about by Covid restrictions. Having now acquired their own canning facility, they can now adapt the packaging to suit the prevailing market demands.



We sampled a couple of newly introduced canned / keg ales, as well as the 'tap takeover' providing 6 of their core range of cask ales on the hand pumps. All excellent IMO.



The knowledge and enthusiasm for craft brewing was clearly evident within the brewing team who presented the evening. They showed their commitment to retain cask output, for as long as restrictions and market make it viable.



Meeting the Tonbridge Brewery brewers, with sample of various malts and hop varieties

The new beers were:

- TE TAU IHU - New Zealand Hopped Ale, Alc. 4.5% Vol, in keg and can
- DAS KÖLNER - German Hopped Ale, Alc. 4.3% Vol, in keg and can

*Norman Warner, Pub/Club Contact BR6*

*All you need is love...*  
and a  
CAMRA Gift Membership



**Treat your Valentine today**

## CAMRA News

*The Branch Secretary runs through some of the national and regional news from CAMRA.*

Spring must be on the way! Although Sunday would have found me cosily ensconced having a pint or two with good friends, in front of a log fire, in one of my locals, I could not help but notice this afternoon that it was still light at 4.30. Hooray, the dark nights are leaving and once again we can start dreaming of outdoor beer festivals, pub barbecues and summer ales (although I prefer the stouter type of brew, if being honest). Bring on May Cider month!

So, what has CAMRA been up to since I last wrote?

### Covid related

Do not stop, read on – this is good news!

East Anglia campaigners who rescued the [Blue Bell Inn](#) in Stoke Ferry, Norfolk have been recognised with the Campaign for Real Ale's prestigious Pub Saving Award for their efforts.

The Blue Bell, which was the last pub in the village of Stoke Ferry, has been trading as a pub since 1794; however, it was closed in March 2018, and in 2019 an application was submitted to convert the pub into housing. Local villagers fought back, (hooray!) and the Blue Bell was listed as an Asset of Community Value (ACV) in March 2020, giving the community time to raise funds to buy the premises.

Throughout the Coronavirus restrictions that came into effect not long after, a dedicated committee continued to fight for the pub, leafletting, holding online wine and beer tastings and quiz nights. Celebrity support came in the forms of England cricketer Ryan Sidebottom, comedian Stephen K Amos and Stephen Fry.

Indeed, after a long journey that one of CAMRA's judges described as "*a tale of dogged persistence ending in triumph*", the Blue Bell pub was purchased in June 2021. At the time of writing, it has not yet formally re-opened but with three quarters of the 400 plus investors being local, it does look promising for the future. So we wish them good luck (and if you are up that way this Summer, why not pop in and say hello).



And not to omit the runners-up in the campaign who saved the [Railway Arms](#) in Saffron Waldon, Essex. This 19th century branch line pub was saved in October 2020 after a 4-year campaign by the group STRAP (standing for 'Save The Railway Arms Pub'). Closed on New Year's Day 2016, no surprise, the owners had had plans to build houses on the pub garden and convert the main buildings into residential ones.

After a prolonged campaign, the pub came into community ownership in October 2020, before reopening under COVID restrictions on 16 April 2021. Since opening, as well as providing a full range of pub services and facilities, the Railway Arms has hosted theatrical performances in the garden, played a full part in Saffron Walden's 'Fete de la Musique'. The pub also hosts a local cycling club whose weekly rides start and finish at the pub and has a fortnightly 'knit and natter' session, organised by a local craft shop!



## The Peoples Awards

Marking CAMRA's 50th anniversary celebrations, nearly 70 individuals who have made significant contributions to the beer and pubs industry during its half century have been recognised through CAMRA's 'Golden Awards'.

Nominated directly by CAMRA members, notable recipients included: Paul Jones, MD of Cloudwater; James Finch, aka The Cider Critic; Annabel Smith, Beer Sommelier; and Cath Potter & Dick Withecombe, founders of Manchester Cider Club. As well as these and the more unsung heroes, the CAMRA [press release](#) on 17 January made a particular point of mentioning Gordon Brown and Sadiq Khan.

The former Chancellor of the Exchequer **Gordon Brown** made the list for introducing Small Brewers' Relief in 2002, which created a huge boom in small and independent brewing in the UK and consequently greatly increased the diversity of beers on the market for consumers. Small brewers continue to be the backbone of the UK's thriving beer scene, but still face serious issues when it comes to market access.

**Sadiq Khan**, is recognised for introducing in London one of the most comprehensive pub protection policies across the UK. Unfortunately, not all regions benefit from similar pub protective measures and CAMRA continues to urge the Welsh Government to carry out their promised review of planning use classes this year to give pubs better protections in the planning system, and for the Scottish Government to take action to prevent pubs being demolished without planning permission.

The full list of awards may be found [via this link](#).



2004. Gordon Brown receiving CAMRA's Parliamentary of the Year award from former CAMRA National Chairman Colin Valentine.

From CAMRA website

## One To Try

What is this I hear you ask? Well, you will know of **Real Ale in a Bottle**? Stand for 24 hours before drinking etc. Well, this is now being re-launched as an accreditation scheme, designed to promote and support the brewers who make the products we love. Any brewer of live beer can sign up, from innovative start-ups to familiar favourites, and use the 'One to Try' logo on their canned and bottled live beers. This means consumers (us) can explore everything live beer has to offer with confidence – knowing that any beer that carries the *One to Try* logo will be in perfect condition.



So, what is bottle conditioned? This means that the brewing process doesn't end at the brewery, instead your beer is a fresh, living product that gets better with age<sup>1</sup>. Conditioning creates a small amount of sediment that will settle at the bottom of the bottle or can – just like the sediment found in a cask of ale at the pub. Unlike filtered, pasteurised beers which get their fizz artificially, 'One to Try' beers will have a smooth texture and a light sparkle gained through natural fermentation.

For more information follow [this link](#).

That about wraps up CAMRA news for this month. Enjoy your log fires whilst they last!

*Kent Sadler, Branch Secretary*

---

<sup>1</sup> I highlight this comment, since, as with all living things, there is a limit to the aging process. Anyone who has tried a somewhat out-of-date bottle of such beer will no doubt have experienced that delightful moment upon opening, when half the contents decide to evacuate the bottle – generally all over the kitchen cabinets, just cleaned after dinner....

# CAMRA's Inclusivity, Diversity and Equality Review

*All members are being urged to spend a few minutes to complete an online questionnaire as part of CAMRA's Inclusivity, Diversity and Equality Review.*

## What is the Inclusivity, Diversity and Equality (IDE) Review ?

In response to discussions in the wider beer and pub industry about the continuing prevalence of discrimination and how to tackle it, CAMRA is carrying out a review of its policies, working practices and procedures relating to IDE. CAMRA wants to make sure that everyone is safe and welcome within the organisation and at CAMRA events.

A Review Group has been formed to carry out this work and form recommendations to CAMRA's National Executive. You can read more about the Review Group and their remit [via this link](#).

## About the survey

This survey is designed to capture views, experiences and feedback from CAMRA members, volunteers, and the public, including people who have attended any CAMRA beer festivals and events, and will run until 14<sup>th</sup> February.

**Click here to take part  
in the consultation**

This survey is designed to collect feedback on how CAMRA:

- Runs beer festivals
- Recruits members and volunteers
- Organises and run meetings and events at branch, regional and national level

And also feedback on:

- Communications to the public, members, and across websites, social media, publications, and press activity.
- CAMRA's complaints and disciplinary processes.

**Have you completed the  
questionnaire?**  
**The deadline is 14<sup>th</sup> February**

CAMRA Inclusivity, Diversity and Equality Review Consultation

✓ Thanks!

Your response was submitted.

## We need your Beer Scores

Bromley CAMRA uses beer scoring to identify pubs/clubs for possible inclusion in the Good Beer Guide.

Beer scoring is quick and simple using [WhatPub](#) or the [GBG App](#)

**WHAT?UB**  
National Beer Scoring System

Please see the branch website for more  
information about Beer Scoring

# The February Quiz

*This month's quiz is on the theme of entertainment.*

- 1) In which South American country did the ballroom dance, the Tango originate?
- 2) Which famous cowboy actor and singer was associated with the horse called *Trigger*?
- 3) Which British rock singer recorded the album *'Every Picture Tells a Story'*?
- 4) Who wrote *'The Guns of Navarone'* and *'Where Eagles Dare'*?
- 5) Which US actor starred in the films *'The Magnificent Seven'*, *'Bullet'* and *'Papillon'*.
- 6) What is the English name for the movement in French cinema called *'Nouvelle Vague'*?
- 7) Who directed the films *'The Leopard'*, *'The Damned'* and *'Death in Venice'*?
- 8) Which actress played Scarlet O'Hara in the 1939 film, *'Gone with the Wind'*?
- 9) What was the stage name of actress Harlean Carpentier, the original 'Blonde Bombshell'?
- 10) Which British actress married Laurence Olivier in 1961?

*Martin Gee, Quizmaster*

The answers to the quiz are at the foot of this page

---

The Editor would like to thank the various members who have supplied content or otherwise assisted in the production of this issue, including Charles Tucker, John Middlemiss, Kent Sadler, Martin Gee, Nick White, Norman Warner, Tim Lewis, Tim Wilding, Wendy Reynolds. *(With apologies to anybody who I have not listed!)*

## Contacting Bromley CAMRA

- Website: [bromley.camra.org.uk/](http://bromley.camra.org.uk/)
- Twitter: [twitter.com/CAMRABromley/](https://twitter.com/CAMRABromley/)
- Facebook: [facebook.com/bromleycamra/](https://facebook.com/bromleycamra/)

General enquiries about the branch should be sent to: [branch.contact@bromley.camra.org.uk](mailto:branch.contact@bromley.camra.org.uk)

All officers of the branch can be contacted direct by email, full details can be found on the branch website: <https://bromley.camra.org.uk/about-us/contact-us/>

The March Newsletter will be published on **1<sup>st</sup> March 2022**

You can contact the editor by email: [newsletter.editor@bromley.camra.org.uk](mailto:newsletter.editor@bromley.camra.org.uk).

The views expressed in this newsletter are those of their individual authors and are not necessarily endorsed by the editor or CAMRA.

© 2022 Bromley CAMRA

### Quiz answers:

- 1) Argentina; 2) Roy Rogers; 3) Rod Stewart; 4) Alistair Maclean; 5) Steve McQueen;  
6) New Wave; 7) Luchino Visconti; 8) Vivien Leigh; 9) Jean Harlow; 10) Joan Plowright