

CAMRA Bromley Branch

e-Newsletter

April 2022



In this issue:

[Branch Calendar](#)

A variety of social events and meetings are planned for April.

[From the Chair](#)

Branch Chair Charles Tucker looks forward to the next 12 months.

[Bromley CAMRA AGM, 2022](#)

A report on the Branch AGM, held on 19th March.

[CAMRA News](#)

The Branch Secretary runs through some of the news from CAMRA.

[Beer Festival Update](#)

The latest news about Beckenham Beer & Cider festival.

[Why do we keep asking you to submit beer scores?](#)

A reminder about why Bromley CAMRA needs your Beer Scores, and a look at some of the Beer Score data from 2021.

[From the Archive, Good Beer Guide 1982](#)

We look back 40 years at the Bromley listings in the Good Beer Guide for 1982.

[Pub Heritage](#)

We look at the Grade II Listed Daylight Inn in Petts Wood, and suggest a walk through the nearby National Trust woodland.

[Pub News](#)

There is good and bad news this month.

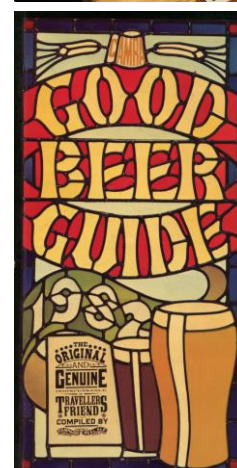
[The April Quiz](#)

This month's quiz is on science and nature.

The Bromley Branch e-Newsletter is published every month, on approx. the first day of the month.

The e-Newsletter is designed to be read online, so that you can click on links to view all of the many linked documents.

Members who have 'opted in' to receive emails from the branch will receive an email to notify them when each newsletter is available to download from the Branch Website.



From The Archive.
Good Beer Guide
1982



Welcome to the April 2022 e-Newsletter

It's a very full issue this month, so no space for anything more from me.

Bob Keaveney, Editor.



Photo supplied by the Hop Inn

Members at the Bromley Branch social at the [Hop Inn Micropub](#) in Hornchurch.
The pub is the current Greater London CAMRA Regional Pub of the Year.

Bromley CAMRA Pub and Club of the Year 2022 Award Presentation Evenings



Wednesday 6th April
Pub of the Year Award

19:30.

[One Inn The Wood](#)
209 Petts Wood Rd, Petts Wood.
BR5 1LA.



Wednesday 27th April
Club of the Year Award

From 19:00.

[Orpington Liberal Club](#)
7 Station Rd, Orpington
BR6 0RZ.

The presentation of the PotY runner-up award will be at the [Star & Garter](#) on Monday 9th May

Branch Calendar, April 2022

Saturday 2nd. London Cider Festival Social.

- Noon. Matchstick Piehouse Theatre, Railway Arches 213-214, Edward Street, Deptford. SE8 5HD.

Wednesday 6th. Bromley Pub of the Year Award Evening.

- 19:30. [One Inn The Wood](#). 209 Petts Wood Rd, Petts Wood. BR5 1LA.



Saturday 16th. Beer Festival Social.

- From 12:30. [Greyhound](#), Commonside, Bromley, Keston. BR2 6BP.

Tuesday 26th. Committee Meeting(*).

- 19:30. [Imperial Arms](#), 1 Old Hill, Chislehurst. BR7 5LZ

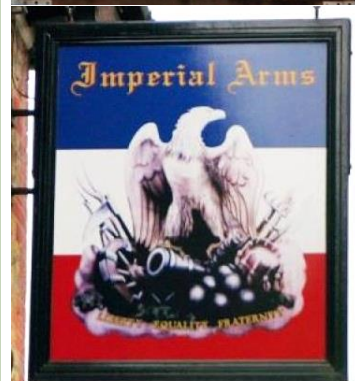
Wednesday 27th. Bromley Club of the Year Award Evening.

- From 19:00. [Orpington Liberal Club](#), 7 Station Rd, Orpington. BR6 0RZ
- Also, a Meet *the Brewer* evening at the club, with Twickenham Fine Ales



Sat 30th. Local Brewery Loop Social.

- 14:00. [Ignition Brewery](#) Tap Room, Ground Floor, The Sydenham Centre, 44A Sydenham Rd. SE26 5QX
- 15:30. [Southey Brewing](#) Tap Room, 21 Southey St. SE20 7JD
- 16:50. [BR3WERY](#), 253 Beckenham Road, Beckenham. BR3 4RP
- 18:00. [Three Hounds](#), 57 Beckenham Road. BR3 4PR
- Click [here](#) for more information about the Local Brewery Loop



Full details of all events, including suggested public transport options, can be viewed on the branch website: <https://bromley.camra.org.uk/calendar/>

(*) Members of Bromley CAMRA who are not on the committee are always welcome to attend committee meetings. Non-committee members planning to attend a meeting may request the Secretary secretary@bromley.camra.org.uk to prepare and print a pack of relevant committee papers to be made available for them at the meeting.

From the Chair

Following on from our 11th Annual General Meeting, Branch Chair Charles Tucker writes about the synergy of our Committee with its Branch members, whilst contemplating a positive year ahead free of lockdowns.

Our Bromley Branch Annual General meeting was held on the 19th March, so this is my first e-Newsletter article as the incoming Branch Chair for the 2022-23 Committee.

As well as me, 18 other Branch Officers were also elected at the AGM to serve on the Committee. The AGM elections are a true example of branch member democracy in action. The Committee positions are open to all members if they wish to stand, and it is the branch members themselves voting at the AGM who actually determine who the new committee members will be. In this last respect, I thank you, our members, for your display of confidence in me and I look forward to engaging with you all as the 2022-23 Chair.



I have heard it said that *“a committee is a cul-de-sac down which ideas are lured and then quietly strangled”*. I can assure branch members that that is not the case for your committee! We should remember that all the Branch Officers are volunteers and that they offer themselves up as Committee members because they believe in CAMRA and its campaigning aims. They do not put themselves forward for any personal gain, but wish to serve the branch members and help ensure we can all enjoy the unique qualities of real ale, real cider, and the British pub. For Committee members *‘Pubs, Pints, People’* is more than just a CAMRA campaign slogan.

This will be my third year as the Bromley Branch Chair. The last two years of the pandemic with its various full and partial lockdowns has been a difficult time – not only for us as CAMRA members, but also for the beer and cider sector in general. Although since July last year we have had full access to pubs, the next 12 months as Chair will be the first time I will be carrying out my role under normal conditions for a full year’s tenure. As we move into summer, many exciting Branch and CAMRA activities are ahead including, after two years absence, the return of our Beckenham Beer Festival in July and the Great British Beer Festival in August. All in all, a much more joyful branch year lies ahead. We can look forward to going out in lighter and warmer evenings, exciting branch social events, new awards to pubs, and new CAMRA campaigns. We are very lucky in Bromley branch to have such a wonderful and diverse range of pubs, micro pubs and microbreweries in our patch. I would encourage all of our members to visit their locals and show them much needed support.

Never forget, if we are to ensure the success of our Branch and CAMRA we need our members input. The effectiveness of the Branch Committee also depends on it. Please do get in touch with your Committee members. Tell them how you would like see the Branch and CAMRA develop in the future. We always need new ideas and new people on the Committee, so check out the vacancies on the Branch website.

I thank you all for supporting the Committee, our branch, and CAMRA over the past year and look forward to continuing our collective aims during the year ahead.

Charles Tucker, Branch Chair, 2022-23

Bromley Branch AGM

Branch Secretary Kent Sadler reports on the recent AGM of the branch.

Home sweet home! No more Zoom meeting. This year brought us back to the Orpington Liberal Club, their superb selection of beers and recently redecorated facilities. Many thanks OLC.

Of course, with a membership of over 1,500, a good turnout had been hoped for but sadly attendees numbered less than 30. Where are you all?



The Branch Chair addresses the AGM. On the 'top table' are (L-R) Kent Sadler; Murray MacKay; Charles Tucker; Norman Warner & Geoff Strawbridge

For those in the dark on Committees and Annual General Meetings, the core objectives include agreement of the previous AGM Minutes, to review and agree Branch accounts, agree nominations for Branch positions, for the Chair to review the last year and, with Regional Director Geoff Strawbridge attending, to receive a round-up of CAMRA activities and current campaign activities.

So I am pleased to confirm that the 2021 AGM Minutes and the accounts to 30 September 2021 were accepted unanimously noting that, without a festival last year or indeed any other income, our Branch made a small loss of £28.95. There were no campaign expenses, just the cost of frames for our 'Lockdown Heroes' awards.

With no matters arising, our Chair, Charles Tucker, presented his comprehensive report, which included:

- the impact of Covid and the resumption of activities following the lifting of restrictions, sadly too late to enable our beer festival for 2021
- With no GBBF, but there was the 'GBBF at Your Local' campaign and our thanks to the pubs and club who supported this;
- the return to growth of our membership with 40 new member in the year – this had sadly dipped during lockdown;
- Beer Scoring, selection of Good Beer Guide entries and Branch Pub of the Year and Club of the Year;
- our monthly newsletter; Social Media, maintenance of What Pub entries and Committee roles and vacant positions
- we STILL need a Vice Chair and a Pub Preservation and Protection Officer. Can you help?

Charles went on to thank the outgoing Committee for their hard work and support over the year, the membership of our CAMRA Branch and, in particular, the hard work carried out on our behalf by our Regional Director, Geoff Strawbridge. Charles also thanked the CAMRA Central Office team for their support of the Branches.

Following the election of the Branch officers and our Accounts Examiner, Geoff presented a summary of CAMRA activities over the year, making the point that he finds our Bromley Branch to be one of the best Branches within London, both for organisation and social activities. He particularly thanked our Treasurer Murray for the adoption of the 'COBAS' online accounts system now used by CAMRA.

Geoff expressed his sympathy with our lack of the ability to welcome all new members by direct contact, due to the interpretation of GDPR legislation, which is to be the subject of debate at the

National AGM and Members' Weekend. Geoff also remarked how hard he has pushed CAMRA for a national initiative on the need for beer scoring.

In closing, Geoff thanked the Branch for all that had been achieved in a very unusual and challenging year. Charles, our re-elected Chair, then closed the formal part of the AGM, inviting attendees to remain to enjoy the hospitality of the Orpington Liberal Club.

Kent Sadler, Branch Secretary

CAMRA News

The Branch Secretary also runs through some of the national and regional news from CAMRA.

The Sun is out, Spring Equinox has come and gone – the days are longer than the nights. Bye bye Winter!

So, in looking over CAMRA news this month, what can I report on? Well, with only a modicum of space available to me this month, I can quickly summarise as follows

The 2022 Budget

CAMRA pushed for three key steps with the 'Spring Statement' to help combat the impact of spiralling business costs, namely:

- Expanded Business Rate Relief to both include more businesses and provide a greater level of relief.
- Accelerated implementation of the new preferential duty rate for draught beer and cider.
- For the current temporary 12.5% VAT rate for some goods and services within the hospitality industry to be made permanent.

Update:
Follow [this link](#) to read about CAMRA's reaction to the Spring Statement

Beer in a bottle – One to Try

Back in our February e-newsletter, I included mention of the changes to the accreditation scheme. Well matters have moved forward and the latest press release on 10 March takes forward the Real Ale in a Bottle accreditation scheme with this new name and bold new look!

In fact, the press release further covers the brewery, Moor Beer, which has been the first brewery to have a can conditioned beer. Whatever next! More information is [here](#).



50th Anniversary

The partying continues! Whilst the CAMRA 50 year anniversary was, strictly, last year, there are still some further 50 year events to celebrate. One of these is at The Rose Inn in Nuneaton which during March hosted the 50th anniversary AGM celebrations for CAMRA. Follow [this link](#) for more on this.

What's Brewing

I have summarised above some of the recent press releases issued to date, but for further detail and more news, don't forget to [log into](#) What's Brewing. At the time of writing, the front page covers the return of an Adnams favourite, cask beer and the pandemic, the CAMRA 2022 conference and a lot more current topical issues. Go on - have a look.



Kent Sadler, Branch Secretary.

Beer Festival Update

Preparations continue for the return of Bromley Branch's beer & cider festival. Festival Coordinator Charles Tucker reports on the latest news.



Good progress continues to be made on the festival preparations. Now we have CAMRA agreement of the festival budget, we have started to purchase the equipment we need. As such, the warehouse order has been sent in, alongside the CAMRA publicity order. We have also ordered the CAMRA Tombola Kit and already a few branch members have donated prizes. Adnams brewery will also be giving us some tombola prizes. The beer and cider selection teams are progressing on the likely order list, with a focus on suppliers local to Bromley.

The sponsorship funding has started to come in with Adnams brewery submitting a full page advert for our programme. More sponsorship is needed of course, both for the programme and cask-ends, so I would encourage our members

to go out and try to get more sponsorship for us where you can. To help you with any likely sales pitch, I can provide you with a 'crib sheet' if you contact me.

The **festival logo** has been finalised and will soon be used for our publicity and advertising. As well as the festival programme, there will also be an A5 festival flyer and festival business cards that can be distributed to make sure news of our festival is spread widely around. The entries for What's Brewing and the CAMRA website have been submitted and are now online on the CAMRA events web page. Our branch social media channels and website will soon be updated with all the latest information.

The number of people **volunteering** to work at the festival is still increasing but we could always do with a few more. You can sign-up at this [link](#). I am pleased to say that the appeal for First Aid volunteers has been successful and we now have five people who have volunteered for training. It would be ideal to have just one more volunteer, but I am happy that the first aid situation seems resolved and I am now arranging the required first aid course.

We are still looking for a **mobile caterer**. We had several who initially expressed an interest, but have now said they cannot make our festival dates, or have even gone out of business. The sort of caterer we are looking for should be able to offer vegetarian food choices as well as the more standard burger/hotdog/pizza/fish/etc. 'grab and go' type of food. Tea, coffee, soft drinks should be an option. If you know of any caterers who are suitable, please let me know, otherwise I will have to get out my own barbecue and Soda Stream kit!

The **online ticketing** system we will be using for the festival is ready to go live on the 8th April and this will be the [link to use](#). We want to encourage as many festival-goers as possible to buy their entry tickets and beer vouchers online as this will greatly help the management of the festival. Online ticket prices will be £3 for one day and £7 for a three day ticket. On the door entry prices will be £4 per day. CAMRA members and under-26 will have free entry. Online beer vouchers will be priced at £10 and will be exchangeable for 100 x 10p tokens at the festival.



A **special event** is planned on the opening day of the festival on Thursday 28th July. There will be a unique opportunity to discover a selection of great London beers in the expert company of renowned beer writer and Accredited Beer Sommelier Des de Moor at an exclusive festival tasting. He will take you through beer tasting and appreciation and talk about beer styles and the recent astonishing renaissance of brewing in the capital.

Places will be free but limited, so please book in advance on the online [ticket website](#) when it goes live.

Also a **book signing**, Des will be near the membership stand on Thursday at 5.00pm signing copies of the new 3rd edition of his award-winning guidebook London's Best Beer Pubs and Bars.

Charles Tucker, Festival Coordinator

Beckenham Beer & Cider Festival, 28th to 30th July 2022

See the festival page on the [Branch website](#)

Volunteer [here](#)

All enquiries to the [Festival Coordinator](#)



Volunteers needed!

Bromley has selected [One Inn the Wood](#) as our **Pub of the Year** for 2022. The other twelve CAMRA branches in Greater London are also each choosing their winners, although not all have yet made the announcements.

The pubs of the year of all thirteen branches will be visited by judges during April, May and June, and Bromley Branch needs members to volunteer to join our judging team.

- We don't expect every judge to visit all of the pubs, although we would ask you to try to do as many as possible
- All the pubs are in Greater London, so can be accessed by public transport (in 2021, eleven of the thirteen pubs were within Zones 1 to 4)

Please contact me [by email](#) if you might be interested, or would like any further information.

Bob Keaveney, Beer Scores Coordinator



Other local CAMRA festivals

London CAMRA Branches present

Cider & Perry Festival



Saturday
2nd April
12 - 10pm
(until stocks run out)

**30+ Ciders
& Perries
+ Bar & Pies**

Admission £3
CAMRA Members &
Students £1

Matchstick Piehouse
Arches 213/214, Edward Street, New Cross SE8 5HD
www.matchsticktheatre.com www.sel.camra.org.uk @ciderspring
Nearest stations: New Cross & Deptford




15th Bexley Beer Festival

Dartfordians Community Sports Club
War Memorial Club House
Bourne Road, Bexley, Kent, DA5 1LW

90+ Beers & Ciders

Refundable Souvenir Glass, Hot & Cold Meals.
(Snacks & soft drinks available at club bar)

Thursday 5th May 2022 2pm - 11pm
Friday 6th May 2022 11am - 11pm
Saturday 7th May 2022 11am - 8pm

CAMRA members and under 26s (with proof of ID) FREE
Non-CAMRA £3

Updates available nearer the date on bexley.camra.org.uk

twitter.com/bexleycamra

Nearest Railway Bexley Station
132, 229, 492, 812

Bus Routes to Dartford Road Bus Stops F & H

ALL RIGHTS OF ADMISSION RESERVED

Printed by Macaulay Scott printing company www.mcscoff.co.uk

Back for 2022



21st Kingston Beer & Cider Festival

SUPPORTING PROSTATE CANCER UK

Thursday 19th to Saturday 21st May 2022
Presented by Kingston & Leatherhead CAMRA
and remembering ABC motorcycles that were made in Kingston 100 years ago

Kingston Workmen's Club and Institute
Old London Road, Kingston KT2 6ND - Behind the 'falling down' telephone boxes
Four minutes walk from Kingston rail and bus stations

- 70 real ales, many local
- 11 ciders & perries
- Hot and cold food
- Plenty of lounge seating
- Two outdoor areas with tables and seating
- Fully stocked wine and spirit bar on site

Thursday: 12.00pm-10.30pm, entry £5
Friday: 12.00pm-10.30pm, entry £5
Saturday: 12.00pm-9.00pm or until the beer runs out, entry £2

£2 discount for card carrying CAMRA members and students (£1 discount on Saturday)
Plus £1 Refundable Glass Deposit

Join CAMRA at the Festival and get two free pints!
This Festival uses tokens at the bar.
Visit kandl.camra.org for beer list during May

*T & C's apply:
Prostate Cancer UK is a registered charity in England and Wales (1105641) and in Scotland (SC238032). Registered company 02553887.

SE LONDON CAMRA presents

15th Kidbrooke Beer & Cider Festival

2022

THU 26 - SAT 28 MAY
12.00 - 22.30

40+ real ales | 20+ real ciders
Members, non-members and families welcome.

CHARLTON PARK RFC, 60A BROAD WALK, SE3 8NB

SEL.CAMRA.ORG.UK #KBCFEST @SELCAMRAFEST

Go to <https://camra.org.uk/beer-festivals-events/festival-season/> for more CAMRA beer and cider festivals.

Why do we keep asking you to submit Beer Scores?

Our Beer Score Coordinator reminds us why CAMRA needs your Beer Scores.

Bromley CAMRA, like most other branches, uses **Beer Scoring** as the primary means of identifying pubs and clubs for possible inclusion in the Good Beer Guide. Members are encouraged to record and submit a score every time they drink real ale or real cider/perry in a pub, bar or club.

Until the Covid lockdowns, each year we received several thousand scores from CAMRA members. Unsurprisingly, the numbers of scores received, and the number of members scoring, were much reduced during 2020 and 2021.

We need to receive as many scores as possible for each pub/club, from as many members as possible, throughout the whole year.



For a pub or club to be eligible for consideration for inclusion in the Good Beer Guide, Bromley CAMRA requires that during the year it must receive:

- At least 10 scores, and;
- Scores from not less than 5 members, and;
- Scores recorded in not less than 4 different calendar months

It's very easy to submit Beer Scores, either:

- Via WhatPub. <http://whatpub.com> or;
- Using the Good Beer Guide app. <https://gbgapp.camra.org.uk>

For more information about Beer Scoring, please follow [this link](#) to the CAMRA national website.

What score should I give?

0. **No cask ale** available.

0.5 **Undrinkable**

1. **Poor.** Beer that is anything from barely drinkable to drinkable with considerable resentment.
2. **Average.** Competently kept, drinkable pint but doesn't inspire in any way, not worth moving to another pub but you drink the beer without really noticing.
3. **Good.** Good beer in good form. You may cancel plans to move to the next pub. You want to stay for another pint and may seek out the beer again.
4. **Very Good.** Excellent beer in excellent condition.
5. **Perfect.** Probably the best you are ever likely to find. *A seasoned drinker will award this score very rarely*

Beers in the photo above (L-R):
Deya, It's All Linked. Pale, 4.5% (unfined)
Southwark, Mayflower. Session IPA, 4.2%
By The Horns, Panowow. Bitter, 4.2%

Some data from 2021 Beer Scoring

Whilst the primary purpose of Beer Scoring is to provide data for GBG selection purposes, it does also give us some insight into what (and where) some members have been drinking.

As at 1st March 2022, there were **94** pubs and clubs known to be selling real ale. During the very interrupted and restricted year of 2021, CAMRA members still managed to visit and submit scores for **84** real ale venues, plus also a further 12 venues where real ale was not available. The following data refers only to real ale / real cider.

Which pub/clubs received the most beer scores?

1	Star & Garter, Bromley. BR1
2	Orpington Liberal Club. BR6
3	Real Ale Way, Hayes. BR2

Which pubs/clubs were scored by the most members?

1	Real Ale Way, Hayes. BR2
2	Star & Garter, Bromley. BR1
=3	Lock & Barrel, Bromley. BR1
=3	Real Ale Way, West Wickham. BR4

Which pubs/clubs had the most breweries scored?

1	Star & Garter, Bromley. BR1
2	Orpington Liberal Club. BR6
3	One Inn The Wood, Petts Wood. BR5

Looking at the breweries, beers from a total of more than **240** different breweries were scored during 2021. It is difficult to give the precise number, since not all members included the brewery name when submitting their scores.

Which breweries' beers received the most scores?

1	St Austell (155 scores)
2	Tonbridge (153 scores)
3	Harvey's (119 scores)

Which breweries' beers were scored at the most pubs/clubs?

1	Harvey's (24 pubs/clubs)
2	St Austell (17 pubs/clubs)
3	Timothy Taylor (15 pubs/clubs)



Important Note:

This data only reflects those breweries which were scored by CAMRA members.

Beers from other breweries may have been available at these (or other) pubs/clubs, but were not scored by members.

Confidentiality

Members' personal data in relation to Beer Scoring is confidential.
No member's names, membership numbers, nor their personal scoring records are ever included in any report published by Bromley CAMRA.

From Archive, 1982

The current Good Beer Guide (GBG) has ten entries for Bromley. Forty years ago, in the 1982 edition, there were nine pubs listed.

Sadly, two of the Bromley pubs listed in GBG 1982 have disappeared; the London Tavern and the Golden Lion, both in Maple Rd, Penge (*For more about these pubs, see e-Newsletter September 2020*). However, the other seven are still with us, one of which is listed in GBG 2022. Meanwhile the Bitter End off licence is now the Bitter End Bar; there is more about this on the next page.

The former 'big six' breweries were represented in the selection, therefore the beers available included names such as Taylor Walker Bitter & Ind Coope Burton Ale, from Allied; Charrington IPA & Draught Bass, from Bass; and Fremlins Tusker & Wethered Bitter from Whitbread.

Bromley 9F7

10.30-2.30; 5.30-10.30

(11 F, S)

Bitter End
(off-licence)

Masons Hill (A21)

5-10 Mon-Fri; 10-10 Sat;

12-2, 7-9 Sun

Fuller London Pride, ESB

Greene King IPA, Abbot

Enterprising off-licence with seven beers always available

Bricklayers Arms

Masons Hill (A21)

Shepherd Neame Bitter

Small and unpretentious corner local

Red Lion

10 North Road

☎ 01-460 2691

Fremlin Tusker

Wethered Bitter

Plush and ornate in a quiet back street

Chislehurst 9G6

10.30-2.30; 6-10.30 (11 F, S)

Bull's Head

Royal Parade (A208)

☎ 01-467 1727

Young Bitter,

Special Bitter

Winter Warmer &

Large ivy-clad pub with restaurant and ballroom facilities

Beckenham 9F7

10.30-2.30; 5.30-10.30

(11 F, S)

George

High Street (A232)

Ind Coope Burton Ale

Taylor Walker Bitter

Old weatherboarded pub in busy High Street

Jolly Woodman

Chancery Lane (off A222)

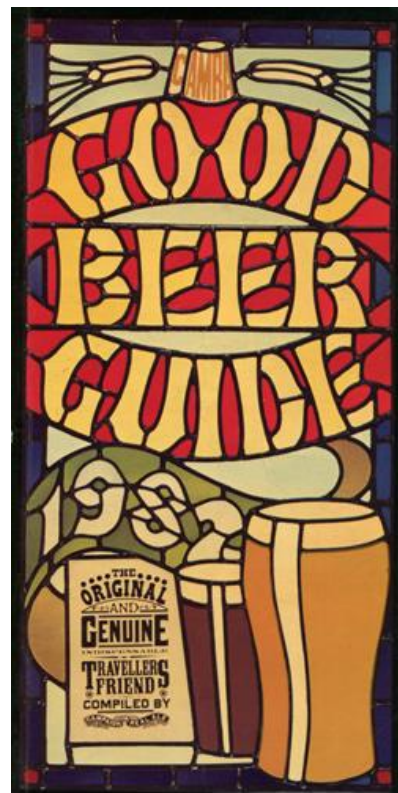
☎ 01-650 3664

Charrington IPA

Draught Bass

Traditional alehouse with no spirits licence

Six of the nine venues in the 1982 GBG



I very much prefer the brief no-nonsense descriptions of the 1982 pubs.

Entries in the GBG now need to be a minimum of 50 words. What was wrong with just saying "Small and unpretentious corner local"?

Bromley Pubs in GBG 1982

- Bitter End (Off Licence), Bromley. BR2
- Bricklayers Arms, Bromley. BR2
- Bull's Head, Chislehurst. BR7
- George Inn, Beckenham. BR3
- Golden Lion, Penge. SE20
- Jolly Woodman, Beckenham. BR3
- London Tavern, Penge. SE20
- Prince Frederick, Sundridge Park. BR1
- Red Lion, Bromley BR1

Shepherd Neame

Shepherd Neame Ltd, The Brewery, 17 Court Street, Faversham, Kent ME13 7AX

☎ 2206

Mild; 1031 – sweet but rather thin

Bitter; 1036 – a fine, well-hopped brew

Stock Ale; 1037 – well-hopped and full bodied

Best Bitter; 1039 – a well-balanced, hoppy brew

Most of the 240 tied houses serve real ale

Beers had much more straightforward names in 1982

In 1982, the list of breweries occupied only 11 pages of the guide. The 2022 edition lists “almost 1,900” breweries and fills more than 230 pages.

The 1982 list of breweries makes for interesting reading, especially for CAMRA members ‘of a certain age’ (*which includes the Editor*). It contains many long-gone breweries, however the beer ranges available were incredibly limited when compared with the choices now available to us in 2022.

It was also interesting to note there were more than 30 ‘home-brew’ pubs listed. I wonder how many such places exist in 2022? Four of the home-brew venues were the first of the ‘Firkins’, listed as Bruce’s Brewery.

The Bitter End

In the 1984 Guide, the Bitter End was listed an off licence, but since December 2017 it has been the [Bitter End Bar](#).

The Bitter End off licence then went on to appear in 13 consecutive editions of the GBG from 1990 to 2012.

The off licence was originally started in the early 1980s, by Bob Irving and Philip Cazaly, they were later joined by Nigel Cazaly.

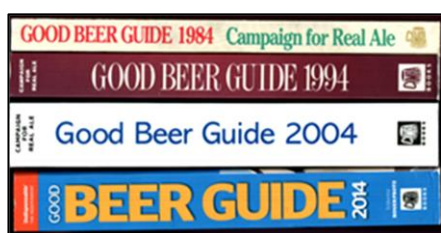
The current proprietor, John Rothwell has been involved since 1989; with John and Nigel running the business until Nigel’s untimely death in 2014. So, as John has been there since 1989, does this mean that he might be Bromley’s longest-serving licensee?

At the time of my visit, there were three cask ales available, Oakham Citra, plus Doom Bar, and London Pride. On a historical note, the bar top in the Bitter End Bar was salvaged from [Bromley Labour Club](#) after the club closed in July 2017.



I drafted this piece just a couple of days after attending a very pleasant branch social evening in the [Cockpit](#) micropub, which is only a few doors down from the [Bull’s Head](#). In GBG 1982, the Bull’s Head was listed as selling ‘Young’s: Bitter; Special Bitter; and Winter Warmer’. On a February evening in 2022, the Cockpit was offering beers from six¹ different breweries, plus several real ciders. The beers included a pale ale; hoppy pale; session IPA; best bitter; dark golden; and stout. How times have changed...

Bob Keaveney, Editor



There is more about Bromley in the Good Beer Guide, 1974 to 2022 on the [Branch website](#).

¹ And the proprietor apologised for there not being a 7th beer available that evening!

Heritage Pubs

Bromley has five pubs on CAMRA's register of historic pubs. This month our BR5 Pub Contact looks at the Daylight Inn in Petts Wood, which is identified as having 'an historic pub interior of some regional importance'.

For those of you who know Petts Wood, there is one building that dominates Station Square - The **Daylight Inn**. This Grade II listed pub was built in 1935 for Charringtons and designed by Sydney Clarke, who also designed 12 other pubs. But it was not an easy journey to get this pub built.

Basil Scruby (the developer of Petts Wood) agreed that Charringtons Brewery could build at the rear of the estate office in Station Square, but there were to be no off sales. Opposition to having any pub in Petts Wood was fierce, so to offset this, it was agreed that it should be built in the Tudor style.

Legal restrictions remained in place for many years preventing any pub being built within one mile of The Daylight Inn. However, Wetherspoons eventually successfully overturned this agreement and the *Sovereign of the Seas* opened in the mid-1990s.



Photos by Wendy Reynolds



The Daylight Inn first opened its doors in December 1935. As well as the bar areas, the pub was also a hotel with 13 bedrooms, plus a large ballroom / function room, complete with a stage and dressing room. Over the years this area has been used for plays, discos, a restaurant and even the venue for *Petts Woodstock*, the local charity music event when it first started. Currently the room is used as a community space.

Even during a substantial refurbishment by Bass Taverns in 1996, which saw the barrel roof in the ballroom restored and an extension built, the character of the pub has been retained.

In 1995, the Station Square area was granted Conservation Area status and the pub was given Grade II Listing in 2015, which has enhanced its standing as one of the heritage buildings in Petts Wood.

The most recent refurbishment included the fitting of a new bar, new flooring and a large clock to the back of the bar, a nod to the pub's name. There are also clock/time themed pictures round the pub. The pub is full of wood panelling and beams and has still retained all the character and heritage features that make it such an important building in Petts Wood.

Continues...

Daylight Inn

Station Square
Petts Wood
BR5 1LZ

[WhatPub](#)
[CAMRA Heritage Pubs](#)

Why the name?

The pub's unusual name commemorates the Daylight Saving bill. This was partly the idea of William Willett, who lived in Chislehurst. He was a keen rider and would ride through Petts Wood early in the morning and see the blinds of houses drawn. He proposed moving the clocks forward 20 minutes four times in April and put back four times in the Autumn. He campaigned for many years for the change, which was introduced in 1916 as a war measure, and then made permanent in 1925.

Petts Wood is known for its [National Trust](#) woods, so after your walk in the woods, why not pop into the Daylight Inn for food and a pint and marvel at an architectural gem.

Wendy Reynolds, Pub/Club Contact BR5



You can read more about heritage pubs at <https://pubheritage.camra.org.uk/>

The four other Bromley pubs on **CAMRA's Heritage Register** are:

[Five Bells](#), Chelsfield. BR6

[Freelands Tavern](#), Bromley. BR1

[Jolly Woodman](#), Beckenham. BR3

[Prince Frederick](#), Sundridge Park. BR1

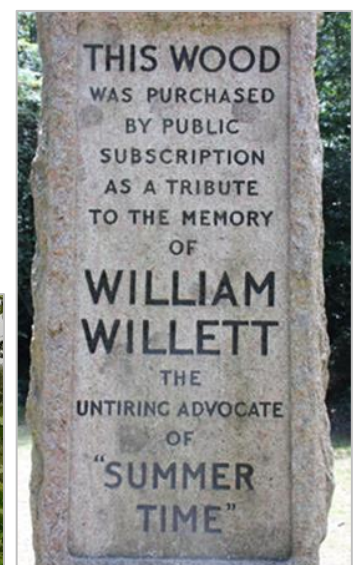
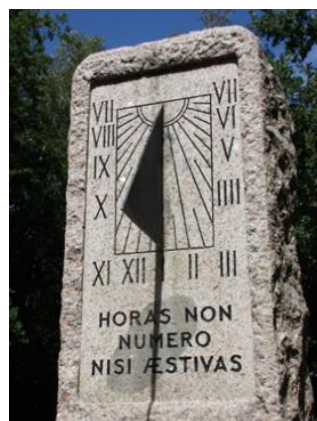
Also, did you know that 12 pubs/hotels in Bromley are Grade II Listed Buildings? (Although sadly two of these are permanently closed as pubs).

There will be more about Bromley's heritage pubs in future issues of the e-Newsletter.

More about William Willett

In the September 2020 e-Newsletter we featured a walk from Petts Wood to Chislehurst, (or vice versa). The route takes you through National Trust woods and farmland, via the Willett Memorial, and also past his grave in St Nicholas' churchyard in Chislehurst.

Bromley CAMRA has published a special [guide to the route](#), now recently updated to include an additional pub!



The walking route now includes a choice of up to **four pubs** in Chislehurst, plus **three pubs** and **one club** in Petts Wood.

Local Pub, Club, Brewery News, in Brief.

A round-up of news from some of Bromley Branch's Area Pub/Club Contacts and Brewery Liaison Officers.

Chelsfield Village, BR6

We understand that licensees Kay & Ade Stone are leaving the [Five Bells](#) after 17 years, which has included appearing in 14 issues of the Good Beer Guide and one year as the SE London CAMRA Pub of the Year (*in the period before the relaunch of Bromley CAMRA in Nov 2011*).

- We hope to be able to bring you more news about the Five Bells next month.



Mottingham, SE9. **Breaking News**

Very disappointing news was received whilst this e-Newsletter was being finalised. The Planning Inspectorate has announced as follows, about the former [Porcupine](#) pub: *'The appeal is allowed and planning permission is granted for the demolition of the existing public house and the erection of an A1 retail foodstore...'*

The permanent loss of one of the very few pubs in that part of Bromley is to be very much regretted. The Branch Committee will be discussing the implications of this decision, and there will be a full report in the next issue of the e-Newsletter.



Sundridge Park, BR1. **Breaking News**

However, there is some extremely good news about the [Crown](#), adjacent to Sundridge Park Station, which reopened as a pub on 31st March, after many years as an Indian restaurant. See the pub website via [this link](#).

- There will be more news about this next month.



Apologies

Unfortunately, we have not been able to include a 'Featured GBG Pub of the Month' in this issue. Hopefully there will be another featured pub in the May issue.



The April Quiz

This month's quiz is all about science and nature.

- 1) Which device in a jet engine provides extra thrust for take-off or supersonic flight?
- 2) Which fish is smoked and sold as 'Finnan Haddie'?
- 3) What is the name of the female reproductive part of a flower?
- 4) What is the name given to the mass of lymphoid tissue at the back of the throat behind the uvula?
- 5) What is dactylography?
- 6) What type of creature is a 'nilgal'?
- 7) Which gas forms a larger percentage of the air by volume, ozone or neon?
- 8) The adjective 'hepatic' refers to which of the five senses?
- 9) What are the constituent elements of the alloy solder?
- 10) What is the meaning of the common abbreviation 'CD-ROM'?

Martin Gee, Quizmaster

The answers to the quiz are at the foot of the next page.

London Pubs Group

The London Pubs Group was established in the early 1990s to promote the preservation of historic and architecturally important London pubs. Meetings are held regularly (six times a year) and are open to any CAMRA members who wish to attend. www.londonpubsgroup.camra.org.uk

The meetings are held at the Royal Oak, 44 Tabard St, SE1 4JU, and pub tours are arranged throughout the year.

The next London Pubs Group Tour is on **Wednesday 13th April 2022** – An Evening Pub Tour of Fitzrovia:

- 19:00 [Flying Horse](#) (*), 6 Oxford Street, W1D 1AN;
- 19:40 [Wheatsheaf](#), 25 Rathbone Place, W1T 1JB;
- 20:10 [Fitzroy Tavern](#), 16 Charlotte Street, W1T 2LY;
- 20:40 [Newman Arms](#), 23 Rathbone Street, W1T 1NG;
- 21:20 [George](#), 55 Great Portland Street, W1W 7LQ;
- 21:50 [Stags Head](#), 102 New Cavendish Street, W1W 6XY.

(*) Formerly 'The Tottenham'





Contacting Bromley CAMRA

- Website: bromley.camra.org.uk/
- Twitter: twitter.com/CAMRAbromley/
- Facebook: facebook.com/bromleycamra/

General enquiries about the branch should be sent to: branch.contact@bromley.camra.org.uk

All officers of the branch can be contacted direct by email, full details can be found on the branch website: <https://bromley.camra.org.uk/about-us/contact-us/>

The March Newsletter will be published on 1st May 2022

You can contact the editor by email: newsletter.editor@bromley.camra.org.uk.

The views expressed in this newsletter are those of their individual authors and are not necessarily endorsed by the editor or CAMRA.

© 2022 Bromley CAMRA

Quiz answers:

- 1) Afterburner; 2) Haddock; 3) Pistil; 4) Adenoids; 5) The scientific study of fingerprints; 6) Large Indian Antelope;
- 7) Neon; 8) Touch; 9) Tin and Lead; 10) Compact Disc Read Only Memory