

# CAMRA Bromley Branch

## e-Newsletter

### June 2022



#### In this issue:

##### [Branch Calendar](#)

A variety of social events and meetings are planned for June.

##### [Beer Festival Update](#)

The latest news about Beckenham Beer & Cider festival.

##### [The June Bromley Pub Walk](#)

This month's walk is to Chelsfield Village.

##### [CAMRA Acronyms](#)

Do you know what is meant by PotY, SotS, RAW, LLC or QH-D? We have a guide to CAMRA acronym-busting.

##### [Good Beer Guide Pub of the Month](#)

This month we look at the Queen's Head in the village of Downe.

##### [Greater London Regional Pub of the Year](#)

Judging is now in progress, but it's still not too late for you to get involved.

##### [CAMRA News](#)

The Branch Secretary runs through some of the news from CAMRA.

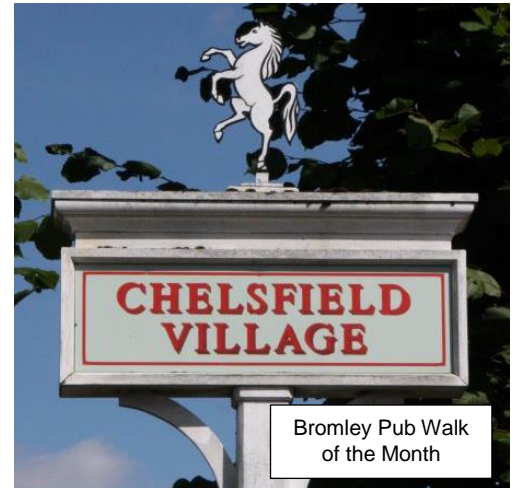
##### [The June Quiz](#)

This month's quiz is on the theme of art and literature.

The Bromley Branch e-Newsletter is published every month, on approx. the first day of the month.

The e-Newsletter is designed to be read online, so that you can click on links to view all of the many linked documents.

Members who have 'opted in' to receive emails from the branch will receive an email to notify them when each newsletter is available to download from the Branch Website.



## Branch Calendar, June 2022

### Sat 11<sup>th</sup>. Summer of Pub social in Chelsfield.

- 12:30. [Five Bells](#), Church Road, BR6 7RE;
- *A final chance to visit the Five Bells before Licensees Ade and Kay leave the pub later this month.*
- 14:45. [Bo Peep](#), Hewitts Road BR6 7QL;
- 16:30. [Chelsfield](#), 1 Windsor Drive, BR6 6EY.
- *Why not walk to Chelsfield Village? See [page 5](#)*



### Wed 15<sup>th</sup>. Bromley North Social.

- 19:30. [Crown & Anchor](#), 19 Park Road, Bromley BR1 3HJ;
- 20:30. [Red Lion](#), 10 North Road, Bromley BR1 3LG.

### Wed 22<sup>nd</sup>. West Wickham and Hayes Micropub Social.

- 18:30. [Real Ale Way](#) (W. Wickham), 75 Station Rd, BR4 0PX;
- 20:15. [Real Ale Way](#) (Hayes), 55 Station Approach, BR2 7EB.

### Mon 27<sup>th</sup>. Committee Meeting. (\*)

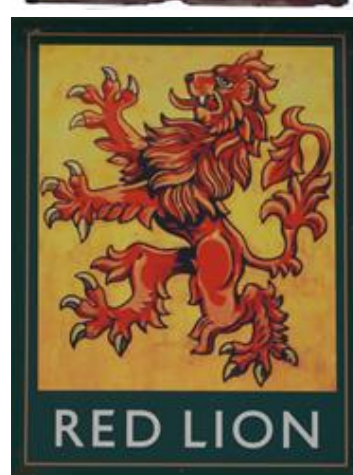
- 19:30. [Beckenham Sports Club](#), 19 Foxgrove Road, BR3 5AS.
- *This is a new venue for Bromley Branch Committee Meetings*
- *Please note that the meeting is on a **Monday**, not the Tuesday as normal*

Full details of all events, including suggested public transport options, can be viewed on the branch website:

<https://bromley.camra.org.uk/calendar/>

(\*) Members of Bromley CAMRA who are not on the committee are always welcome to attend committee meetings.

Non-committee members planning to attend a meeting may request the Secretary [secretary@bromley.camra.org.uk](mailto:secretary@bromley.camra.org.uk) to prepare and print a pack of relevant committee papers to be made available for them at the meeting.



Photos by Chris Crowther

## Beer Festival Update

*Preparations continue for the welcome return of Bromley Branch's beer & cider festival. The Festival Team give us a brief update.*

Steady progress continues to be made on all aspects of preparing for our July Beer Festival, which is now less than two months away. All the 'formal paperwork' has been submitted to the CAMRA Office. All except two of our new volunteer First Aiders have now been trained, with the remaining two scheduled to complete their courses early in June. The next meeting of the festival planning sub-committee will also take place in the first week of June.

Beer and cider selection for the festival is in full swing, and we are planning for the range to be as wide and interesting as in previous years. Brewers have been spoken to and, in some cases, even visited. Beers will be sourced from all over the country, however there will be somewhat of an emphasis on beers that are local. This will not just be *Local* within the CAMRA definition, but really local, some from within easy walking distance of the festival venue.



### Beckenham Beer & Cider Festival

Thursday 28<sup>th</sup> July. 12:00 to 22:30

Friday 29<sup>th</sup> July. 12:00 to 23:00

Saturday 30<sup>th</sup> July. 12:00 to 22:30

*(or until the beer runs out)*

**£3.00** in advance (**£4.00** on the door)

CAMRA Members (and u-26s) Free

*See the final page for full details*

As in previous years, we will be publishing the beer and cider/perry lists a few days before the start of the festival. However, the best way to see which brewers & which beers, ciders & perries are there, is to come to the festival!

The Festival is already selling well through the online ticketing system. Members can buy their beer tokens, and non-members buy their admission tickets and tokens, in advance via [this link](#).

Also, tickets may be booked in advance for the **tutored beer tasting event** with Des de Moor on the Thursday.



You will be given six carefully chosen beers to drink, and Des will take you through a beer tasting and appreciation. He will also talk about beer styles and the recent astonishing renaissance of brewing in the capital. Places will be limited and cost **£6** online or **£7.50** at the door, so please book in advance on the online ticket page. The price includes the six different beers to try.



Des will also be near the membership stand on Thursday signing copies of the new third edition of his award-winning guidebook *London's Best Beer Pubs and Bars*.

### Cask sponsors and advertisers

This year we are offering a chance to sponsor a cask as well as place an advert in the programme. This has been well received, as local businesses are keen to support local events. Post-Covid, online promotion has become really important and we are 'thanking' our sponsors by listing them with a link



to their business on our website, in our monthly e-newsletter and also posting to our followers on Twitter and Facebook. They will of course be visible at the Festival itself.

Thank you to our kind early cask sponsors and advertisers in supporting us to be able to run CAMRA's 7<sup>th</sup> Beckenham Beer and Cider Festival. Your support is greatly valued and we hope to see you at the Festival.

**Breweries and Pubs:**

- Adnams. <https://adnams.co.uk/collections/beers-ciders>
- Blythe Hill Tavern, Forest Hill. <http://www.blythehilltavern.org.uk>
- Bricklayers Arms, Beckenham <http://bricklayersarms.co>
- Greyhound, Keston <https://www.greyhound.pub/home>
- Orpington Liberal Club. <https://orpingtonliberalclub.co.uk>
- One Inn The Wood, Petts Wood. <https://www.oneinthewood.co.uk>
- Queen's Head, Downe. <https://www.queensheaddowne.com>
- Real Ale Way, Hayes & West Wickham. <https://www.facebook.com/therealalewaywestwickham/>
- Southey Brewing. <https://www.southeybeershop.com>

**Others:**

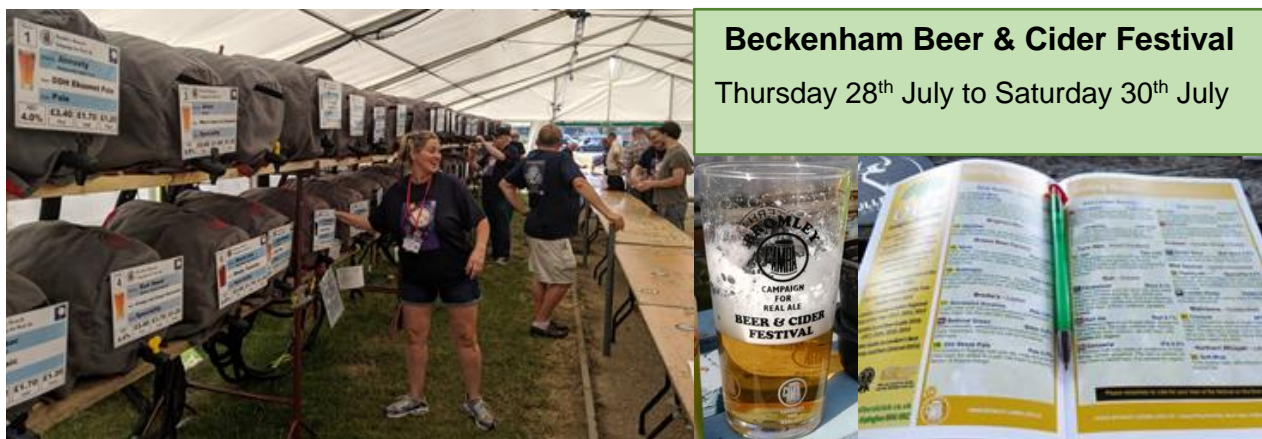
- Cannon Cars, Beckenham. <http://www.cannoncars.co.uk>
- Pavilion Sports & Leisure Club, SE9. <https://www.pavilionse9.co.uk>
- BPM Property Maintenance Ltd <https://bpmcleaning.co.uk>
- GLEMNET Cloud Communication Solutions. <https://www.glemnet.com>
- Plus a mystery sponsor

### **It's not too late to sponsor a cask**

Sponsors and advertisers will be displayed at the Festival and, as part of their package, also receive two complimentary tickets for any day of the Festival.

Any individual or business who would like to help us by sponsoring a cask of beer or taking an advert in the Festival programme please email: [treasurer@bromley.camra.org.uk](mailto:treasurer@bromley.camra.org.uk) for further details.

*Murray Mackay, Norman Warner, Stephen Osborn (on behalf of the Festival Team)*



## The June Bromley Pub Walk

Each month during spring and summer, as part of CAMRA's celebration of **Summer of Pub**, we will be featuring one or more of the Bromley Pub Walk routes. This month, it's a choice of routes to walk to Chelsfield Village, with the option to link several of the routes together to make a longer walk.

Chelsfield Village is very close to the Kent border and the village still has a sign with the 'Kent White Horse'. However, it is part of Bromley, and is home to one of our oldest pubs, the [Five Bells](#).

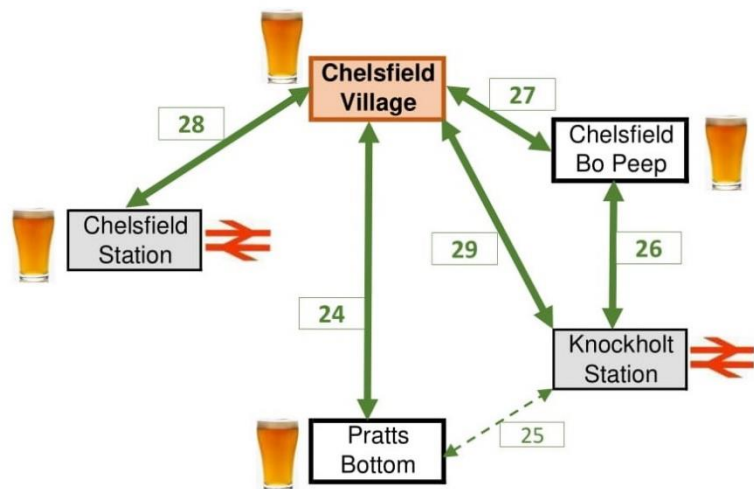


As reported in the last issue of the e-newsletter, licensees **Ade and Kay Stone** will be leaving later this month, after 17 years at the pub, so why not enjoy a summer stroll to the pub to have a final pint (or two) before they leave?

The R7 provides a regular bus service between Orpington and Chelsfield Village, but there are also footpaths linking the pub with Chelsfield Station, Knockholt Station and Pratts Bottom.

There are currently four Bromley Pub Walk routes going to Chelsfield Village. Click on the links below to view or download the individual guides:

- [No 28](#), from Chelsfield Station, approx. **1 mile**.
- [No 29](#), from Knockholt Station, approx. **1.5 miles**
- [No 24](#), from Pratts Bottom, approx. **2 miles**
- [No 27](#), from the Bo Peep pub, which can be linked with [No 26](#), to Knockholt Station, in total approx. **2.1 miles**



On Route 27

Most of the routes are along rural paths, passing through cultivated farmland, horse pastures, coppices, a golf course, and on village roads. There are no steep gradients on the routes, however the area is intersected by several main roads.

These routes could be walked either 'one-way', as an 'out and back', or alternatively two or more routes could be linked together to form a longer walk. Linking some or all of these routes would give the

option of doing a 'pub crawl', taking in up to three other pubs. Public transport is available at all the pubs, so there is also the option of walking to the pub(s), and then using the bus or train to get back.

Each route guide gives all the information you will need for the walk, including details of the public transport connections (and the pubs!).

### **Pubs on the routes:**

- Chelsfield Village, [Five Bells](#) (Photo on previous page)
- Chelsfield Station, [Chelsfield](#)
- Chelsfield (Bo Peep), [Bo Peep](#)
- Pratts Bottom, [Bulls Head](#)

#### **Saturday 11th June**

Bromley Branch Social event visiting Chelsfield pubs, including a visit to the Five Bells to say goodbye to Ade & Kay. See the diary on [page 2](#).

Why not walk between some (or all) of the pubs?

There will be another **Bromley Pub Walk** route featured in the next issue of the e-Newsletter.

All the Bromley Pub Walk routes can be viewed on the Bromley CAMRA [branch website](#).



Photos this page by Chris Crowther

### **We need your Beer Scores**

Bromley CAMRA uses beer scoring to identify pubs/clubs for possible inclusion in the Good Beer Guide.

Beer scoring is quick and simple using [WhatPub](#) or the [GBG App](#)

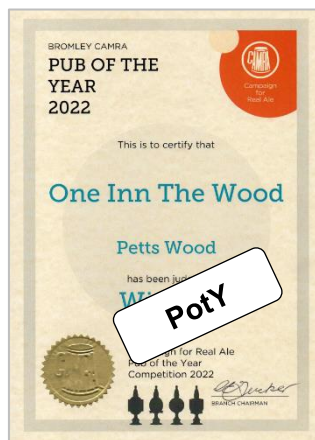
**WHAT?UB**  
National Beer Scoring System

Please see the branch website for more information about Beer Scoring



# CAMRA Acronym-busting

*Do you know what is meant by CotY, SotS, RAW, LLC or QH-D? Read on to find out! We have a guide to CAMRA acronym-busting..*



Hopefully, you won't find any unexplained acronyms in Bromley Branch e-Newsletters, but if you ever do, CAMRA has now published a guide to acronyms.

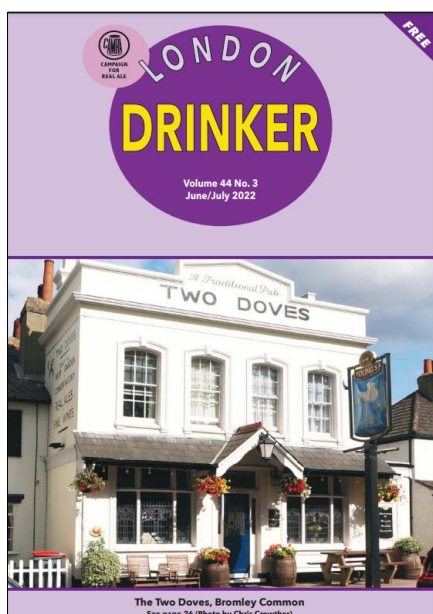
Probably many CAMRA members do regularly use some acronyms, such as GBG (Good Beer Guide), GBBF (Great British Beer Festival) and PotY (Pub of the Year). However, CAMRA has identified a total of **more than 100**, which you can view [via this link](#).

I do hope that our Quizmaster doesn't decide to make CAMRA acronyms the topic for the next quiz.

And, as you have evidently read this far, the answers to the opening question are:



- CotY Club of the Year. *This could be the branch, regional or national Club of the Year.*
- SotS Sovereign of the Seas. *The JD Wetherspoon pub in Petts Wood.*
- RAW Real Ale Way. *Micropubs of this name in Hayes, West Wickham and Westerham.*
- LLC London Liaison Committee. *The regular meeting of representatives from all 13 branches in Greater London, together with the Regional Director. A member of the National executive normally also attends*
- QH-D Queen's Head, Downe. *Not to be confused with the QH-C or QH-GSG, in Chislehurst and Green St Green respectively.*



## London Drinker

The June/July issue of London Drinker is now available online, and printed copies will shortly be available in local pubs.

The front cover features the [Two Doves](#) in Bromley Common, with a photo by Chris Crowther.

Click [here](#) for the online version

Click [here](#) for a PDF of the printed version

## Good Beer Guide Pub of the Month

*Continuing our series looking at the ten Bromley venues listed in the 2022 Good Beer Guide, this month we look at the Queen's Head in Downe Village.*

If, one day, you are out and about, walking, driving or sitting on a R8 or 146 bus, possibly visiting Charles Darwin's Down House or the surrounding countryside, you should not pass through the village of Downe without stopping and giving the local pubs a try. You may notice that one of them, the **Queen's Head**, now has a shop attached as well, *The Queen's Larder and Tea Room*, ideal for a quick takeaway coffee and cake.

The Queen's Head dates back to 1565, albeit with later additions. Naming a pub in those days often reflected your political leanings, a famous visitor or religious event. In this instance, the name commemorates the visit by Queen Elizabeth I to Downe where she attended the baptism of the daughter of her Knight Marshall, Henry Manning.

In those days, the keeper of the *Queen's Hede* (sic) was Timothy Marchant, remaining until 1607. Thereafter the pub has been through a variety of publicans, including that of the Town Crier of the Parish. It was a coaching house when Downe Road was perhaps a little more important than the present Biggin Hill Main Road on its way to Westerham and Sevenoaks. In fact, the pub is mentioned in a timetable dating back to 1794!



As time progressed, another famous visitor was Charles Darwin who settled in the area in 1842. His publication *'The Origin of Species'* caused a stir when published; we have to wonder if any part was penned whilst sitting having a pint of ale, perhaps linking the behaviour of an inebriated local to the animal kingdom!

So, this connection explains the *Darwin Bar* at the pub – but what of the *Suhaili Bar*? Those of a certain age may remember Sir Robin Knox Johnston, who in 1969, became the first person to officially circumnavigate the earth non-stop and single-handed. This was the name of his 32ft ketch. As well as a number of photos in the bar, the adjacent St Mary's Church, has a stained-glass panel given by Mr and Mrs Knox Johnston, residents of the village, in thanksgiving and commemoration of their son's trip around the world.

Of course, being close to RAF Biggin Hill, the pub "did its bit" in WWII. Whilst no doubt being a pub used by many from the air base, it was particularly adopted by the American Eagle Squadron No 133, who arrived in May 1942. Sadly the Eagles lost 13 pilots before leaving in September of the same year. These brave lads are commemorated in the St Georges Chapel at Biggin Hill airport.

The pub went through a bad patch post-2000, closing on a number of occasions, and reportedly





“not being the venue to take your mother to”. Thankfully, Jackie and Nigel took the keys on Valentine’s Day in 2011, with a soft opening on 4<sup>th</sup> March with a single cask of Courage Best! That went quickly and later that month they re-opened fully. Jackie had given up a career as an estate agent, whilst Nigel continued his career as a PubCo Area Manager.

Now assisted by their daughter Lana, cellarman Clive, and staff, they have done much to create a welcoming, friendly pub with good food and, importantly, good beer, leading to them being a consistent entry in the Good Beer Guide in recent years. In 2014 the Queen’s Head was the Bromley Branch Pub of the Year.

The Restaurant has special fish nights and an impressive menu of classic home-made meals whilst the bar itself needs a separate mention. Accredited as stocking LocAle, the pub has a good selection of cask ales. Locales are often from Bexley and Westerham Breweries, but also from *Craft Beer Man*, just up the road in Knockholt. Ales from further afield include Harvey’s, North Down and Adnams.

Whilst they had for many years stocked a small selection of food in a bar shop, during CoVID lockdowns they came to the assistance of the local community with a full market shop facility, Lana was often to be found in control of the cakes and carrots. The pub was awarded the Bromley CAMRA *Outstanding Lockdown Hero* award for the work done for the community by the pub during the first lockdown. The pub was one of Bromley CAMRA’s first venues for a social in 2021, when once again these became possible.



Photo supplied by Queen's Head

(Above) The ‘market stall’ outside the pub during lockdown in 2020, and the current shop in the pub

The present-day shop in the pub, ‘*The Queen’s Larder and Tea Room*’, was established following the success of the market stall, and can now usually be found to have a selection of Lana’s wonderful baking alongside the bacon, eggs and bread!

I recommend that you do visit the pub, say hello and please do not forget your beer scores afterwards. Beer Scoring is important for pubs such as the Queen’s Head, which are not high street hostleries, and rely on good feedback to survive!

*Kent Sadler,  
Pub & Club Contact for Biggin Hill, Downe  
& Cudham*



Kent Sadler



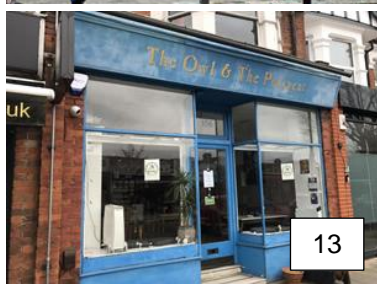
**Queen’s Head**  
25 High Street  
Downe  
BR6 7US  
01689 852145

- [WhatPub](#)
- [Website](#)
- [Facebook](#)
- [Twitter](#)

Another of Bromley’s Good Beer Guide pubs will be featured in the next issue of the e-Newsletter.

# Greater London Regional Pub of the Year

Judging is in progress to select the 2022 Greater London Regional Pub of the Year. Last month we included photos of the Pubs of the Year of six of the other London branches, here are the other six.



## Volunteers are still welcome!

Judging has been taking place since early April and ends on 30<sup>th</sup> June. The winner will be announced in July.

It's not too late to join the Bromley Branch judging team.

- We don't expect every judge to visit all of the pubs, although we would ask you to try to do as many as possible
- All the pubs are within Greater London, so can be accessed by public transport, and most are within Zones 1 to 4.

Please contact me [by email](#) if you are interested, or would like any further information.

*Bob Keaveney, Beer Scores Coordinator*

## The 13 London Branch Pubs of the Year for 2022

1. Bexley. [Long Haul](#)
2. Bromley. [One Inn The Wood](#),
3. Croydon & Sutton. [Hope](#),
4. East London & City. [Ye Olde Rose & Crown](#),
5. Enfield & Barnet. [Little Green Dragon](#)
6. Kingston & Leatherhead. [Wych Elm](#)  
(Note, this is a different pub than initially announced)
7. North London. [Queen's Head](#)
8. Richmond & Hounslow. [Jolly Coopers](#),
9. South East London. [River Ale House](#)
10. South West Essex. [Hop Inn Micropub](#)
11. South West London. [Eagle Ale House](#)
12. West London. [Carlton Tavern](#)
13. West Middlesex. [The Owl and The Pussycat](#)



Photos 8 – 13 are from WhatPub listings, as supplied by members of the various CAMRA branches.



## CAMRA News

*The Branch Secretary runs through some of the national and regional news from CAMRA.*

The BBQ is ready and cleaned, beer in the cooler (not fridge please!) and time flies, so it's welcome to the summary of CAMRA news over the last month that you may have heard about or has slipped you by.

So, what has happened?

### The Champion Bottled Beer of Britain

The Champion Bottled Beer of Britain is awarded to the very best bottle conditioned real ale in the country, being one of CAMRA's most prestigious awards, running for more than 30 years. So, who won? Well judging and confirmation of the winner was announced at the Coventry Beer festival on 5 May.

And? The award was won by Harvey's for its Imperial Extra Double Stout. The beer was described by judges as *"one of the best we've ever had"*. A previous winner in the competition in 2015, it is a *"shining example of a heritage beer style that has been around for centuries"*. Now all I have to do is find a stockist!

Runners up in the competition were Hobson's Dhustone Stout (4.3%) and Runaway IPA (5.5%) which took home Joint Silver.



### Travelling abroad?

Want some reading material? Well welcome to the new pocket guide to beer city breaks in the UK and Europe. The book, **Beer Breaks: the essential pocket guide to European beer travel**, includes over 30 cities ranging from heritage brewing destinations to some of the newer must-visit beer towns. Written by Tim Webb, an esteemed beer writer and author of the 'CAMRA Good Beer Guide Belgium' and 'The World Atlas of Beer', the guide lists over 200 venues across featured cities, with colour photography throughout. Beer Breaks is available from the [CAMRA Shop](#) at a members' price of £13.99 (CAMRA members discounts apply).

In conjunction with the book, CAMRA has **launched a competition** where you are asked to write your own UK beer break using a template from the book, for a chance to win £30 beer vouchers. The [competition](#) closes on 27<sup>th</sup> June – so get writing!

### CAMRA Podcasts – Pubs Pints and People

This continues to break ground with its UK tour having now stopped off in the Cotswolds to discuss everything railways and beers ahead of the local Ale & Steam festival which took place in May.

Episode 2 explored the unique relationship between ale and steam, covering beer/ train ticking, brewing under the shadows of the archways in Bermondsey London and unique festival locations on steam engines and railways stations.

The podcast episode 'Ale & Steam' is now available to download from wherever you get your podcasts. For more information, follow [this link](#).

### Queen's Jubilee and the Summer of Pub

So, I cannot let this one miss us can I? Actor Anna Maxwell Martin poured the first pint of Thank Brew at the Old Queen's Head Pub in London to mark the launch of the [new limited-edition beer](#) brewed for the Queen's Platinum Jubilee Weekend.



All Thank Brew profits will go to help build stronger communities through the [Eden Project Communities](#) (which runs The Big Lunch), [Together Coalition](#) (which runs Thank You Day), and to support Ukrainian refugees arriving in the UK (through Reset Communities and Refugees).



Anna Maxwell Martin said: “Thank You Day is a day for us all to come together – and for millions of us across the UK the very best place to do that is down the local. At their best, pubs can sit at the very heart of our lives, creating friendships and strengthening communities. So, it’s absolutely brilliant to see the whole industry getting involved to create a campaign everyone can get behind – from the pubs to the brewers to the alcohol-free beers – as we get ready for the big jubilee weekend.”

CAMRA is working with Thank Brew to encourage every pub and brewery across Britain to take part in the campaign as part of its Summer of Pub campaign to promote pub-going over the warmer months. To date, 35 breweries – including Adnams, St Austell and Budweiser Brewing Group – and up to 5,000 pubs – including Punch and Greene King – have signed up to brew and serve the beer and host events.

Consumers can search for pubs and brewers running events and stocking the beer using the CAMRA Summer of Pub [interactive map](#).

### Learn and Discover

This platform continues to develop and further guides have just been added, including:

- What do we mean by independent and why does it matter? ([Link](#))
- What can I do to champion cask ale? ([Link](#))



As Alex Metcalfe, CAMRA’s Learning & Discovery Manager, has said: “*The Learn & Discover platform continues to grow and in partnering with such a breadth of talented beer writers and creatives, the quality never ceases to astound me. I think supporting independents and the cask beer sector is something we can all really get behind. Jonny Garret’s latest videos are just the start of what is yet to come over the next few months, and I am really excited to share them.*” Click [here](#) for more about the Learn and Discover platform.



### Cider round up

I have commented previously on the actual apple content in a cider. Well, as part of its biannual Cider Month celebration, CAMRA has joined forces with makers of real cider and perry from across the UK to call for tax reforms that will support high-quality cider.

CAMRA has created an open letter urging the Treasury to increase the Minimum Juice Content of cider – the amount of fresh juice a drink needs to contain to be classed as cider – in order to support makers of high-quality ciders and perries.

With current tax rules only requiring cider to contain 35% juice, meaning drinks topped up with more water or concentrates than freshly pressed juice can be counted as cider for tax purposes, CAMRA thinks is misleading to consumers. (Too right!). As strong support grows across the real cider industry, more producers are being encouraged to sign, with the letter due to be delivered at the end of May. Read more about this [here](#).

### And finally

Have a great Jubilee Bank Holiday. With many of our pubs doing something special, don’t just stay at home with your can of cheap fizz. Support your local!

*Kent Sadler, Branch Secretary.*

## The June Quiz

*This month's quiz is all about art and literature.*

- 1) What is the name of the Barber of Seville in the play by Beaumarchais?
- 2) Which French composer wrote 'The Sorcerer's Apprentice'?
- 3) Name the Montreal-born author of 'St Urbain's Horsemen' and 'Barneys Version'.
- 4) Which Irish poet wrote 'The Lake Isle of Innisfree'?
- 5) Which English poet wrote 'A Shropshire Lad'?
- 6) Which nonsense poem by Lewis Carroll is subtitled 'An Agony in Eight Fits'?
- 7) On whose book was the film 'Fahrenheit 451' based?
- 8) Which Spanish artist's paintings included 1934's 'Girl Reading at a Table'?
- 9) Who was the author of the play 'The Glass Menagerie'?
- 10) Who was the author of the classic novel 'The Three Musketeers'?

Martin Gee, Quizmaster

The answers to the quiz are at the foot of the page.

---

### Contacting Bromley CAMRA

- Website: [bromley.camra.org.uk/](http://bromley.camra.org.uk/)
- Twitter: [twitter.com/CAMRABromley/](https://twitter.com/CAMRABromley/)
- Facebook: [facebook.com/bromleycamra/](https://facebook.com/bromleycamra/)

General enquiries about the branch should be sent to: [branch.contact@bromley.camra.org.uk](mailto:branch.contact@bromley.camra.org.uk)

All officers of the branch can be contacted direct by email, full details can be found on the branch website: <https://bromley.camra.org.uk/about-us/contact-us/>

The July Newsletter will be published on **1<sup>st</sup> July 2022**

You can contact the editor by email: [newsletter.editor@bromley.camra.org.uk](mailto:newsletter.editor@bromley.camra.org.uk).

The views expressed in this newsletter are those of their individual authors and are not necessarily endorsed by the editor or CAMRA.

© 2022 Bromley CAMRA

Quiz answers:

1) Figaro; 2) Paul Dukas; 3) Mordcaai Richler; 4) W.B. Yeats; 5) A.E. Houseman;  
6) The Hunting of the Snark; 7) Ray Bradbury; 8) Pablo Picasso; 9) Tennessee Williams;  
11) Alexandre Dumas












7th Beckenham Beer Festival

Thursday 28 July to Saturday 30<sup>th</sup> July 2022  
12:00 – 22:30 (23:00 Friday)

Beckenham Rugby Football Club  
Balmoral Avenue, Elmers End, BR3 3RD

- 55 real ales
- 20 ciders / perries
- Hot & cold food
- Patio & lounge seating
- Club bar open for wines, spirits, soft drinks
- Special Tasting Event & book signing on Thursday
- Festival entry per day £3 online & £4 at the door - bargain 3-day £7 online
- Free festival entry for CAMRA members & age under 26
- Special 6-beer tasting event with Des De Moor £6 ticket online, £7.50 at door
- Payment for beer & cider at the festival by 10p tokens only
- Buy £10 beer & cider voucher online - exchange for 100 x 10p tokens at festival
- Join CAMRA at the Festival for two free pints of beer or cider



ONLINE TICKET SALES FROM 8<sup>TH</sup> APRIL

<https://tckty.camra.org.uk/e/44/bromley-camras-beer-and-cider-festival>



- 10-mins walk from Elmers End Train Station / Tram Stop
- Buses 54, 194, 358, 367 stop 2-mins away at Eden Park Avenue

 @CAMRAbromley

 @bromleycamra

 [bromley.camra.org.uk](http://bromley.camra.org.uk)



Tuesday 2 August – 12:00 17:00 (Trade Session)

Tuesday 2 August – 17:00 – 22:30 (Public Session)

Wednesday 3 August – 12:00 – 22:30

Thursday 4 August – 12:00 – 22:30

Friday 5 August – 12:00 – 22:30

Saturday 6 August – 12:00 – 19:00

*Last Admission: half an hour before close.*

Full details at: <https://gbbf.org.uk/>