

CAMRA Bromley Branch

e-Newsletter

July 2022



Campaign
for
Real Ale



Thursday 28 July to Saturday 30th July 2022

12:00 – 22:30 (23:00 Friday)

Beckenham Rugby Football Club

Balmoral Avenue, Elmers End, BR3 3RD

See pages 4 & 5 for full details about the festival

In this issue:

[Branch Calendar](#)

A variety of social events are planned for July.

[Beer Festival Update](#)

July is the month of Beckenham Beer & Cider festival.

[A visit to Chislehurst](#)

Our BR7 Pub Contact visits some of the pubs in Chislehurst.

[The July Bromley Pub Walk](#)

This month's walk is from Biggin Hill to Keston, via Downe village.

[Good Beer Guide Pub of the Month](#)

This month we look at the Greyhound in Keston village.

[Pub News](#)

We say goodbye to Ade and Kay after 17 years at the Five Bells in Chelsfield.

[CAMRA News](#)

The Branch Secretary runs through some of the news from CAMRA.

[The Quiz](#)

The July quiz is on general knowledge.



The Bromley Branch e-Newsletter is published every month, on approx. the first day of the month.

The e-Newsletter is designed to be read online, so that you can click on links to view all of the many linked documents.

Members who have 'opted in' to receive emails from the branch will receive an email to notify them when each newsletter is available to download from the Branch Website.



Pub Walks



GBG Pub of the Month

Murray Mackay

Branch Calendar, July 2022

Sat 2nd. Tonbridge Social.

- 11:40 - Meet at [Orpington](#) Station to catch the 11:56 train to Tonbridge.
- 12:15 - [Nelson Arms](#), 19 Cromer Street TN9 1UP
- 13:30 - [Beer Seller](#), 64 High Street TN9 1EH
- 14:30 - [Humphrey Bean](#), 94 High Street, TN9 1AP
- 15:30 - [Fuggles Beer Cafe](#), 165 High Street, TN9 1BX



Tue 5th. Afternoon Social in Chislehurst.

- 14:00 - [Rambler's Rest](#), Mill Place, Chislehurst. BR7 5ND
- 15:00 - [Imperial Arms](#), Old Hill, Chislehurst BR7 5LZ

Sat 9th. Crystal Palace Triangle Social.

- *The annual joint event with CAMRA's Croydon & Sutton and South East London Branches.*
- *All timings are approximate*
- *Based on previous years, the group will probably end up being split across several pubs*
- 12:00 - [Douglas Fir](#), 144 Anerley Rd, SE20 8DL
- 13:10 - [Alma](#), 95 Church Rd, SE19 2TA
- 13:50 - [White Hart](#), 96 Church Rd, SE19 2EZ
- 14:40 - [Sparrowhawk](#), 2 Westow Hill, SE19 1RX
- 15:25 - [Great Southern](#), 79 Gipsy Hill, SE19 1QH
- 16:15 - [Railway Bell](#), 14 Cawnpore Street, SE19 1PF
- 17:10 - [Royal Albert](#), 42 Westow Hill, SE19 1RX
- 17:50 - [Westow House](#), 79 Westow Hill, SE19 1TX

Sat 16th. Eynsford to Farningham (and back again!) Social.

- 11:40 - Meet at [Bromley South](#) Station to catch the 11:53 train to Eynsford;
- 12:30 - [Five Bells](#), High Street, DA4 0AB
- 13:30 - Walk to Farningham.
- 14:00 - [Pied Bull](#), High Street, DA4 0DG
- 14:45 - [Lion Hotel](#), High Street, DA4 0DP
- 15:45 - [Chequers](#), 87 High Street, DA4 0DT
- 16:30 - Walk back to Eynsford.
- 17:00 - [Malt Shovel](#), Station Road DA4 0ER.

Thu 28th to Sat 30th Beckenham Beer Festival.

- Beckenham Rugby Club, Balmoral Avenue, BR3 3RD.
- [See pages 4 & 5](#)

(There is no meeting of the Committee in July due to the Beer Festival.)

Beer Festival Update

Preparations continue for the return of Bromley Branch's beer & cider festival. Festival Coordinator Charles Tucker reports on the latest news.

The starting gun has fired! With four weeks to go to the festival everything is hitting the ground running and we are all eager to give you the branch highlight of the year at the Beckenham Rugby Football Club!

Delivery dates for the festival equipment have been confirmed and the beer ordering is now practically complete, with 54 casks on order. The original target was for 55, but we are now increasing this to 60, as the sponsorship has been going well and the costs are working in our favour. This will also give our festivalgoers much more choice. The cider/perry ordering is a bit behind due to initial supplier shortages, but we are now pursuing other suppliers and we are confident we will get the 20 or more containers we need.



Enjoying the sun and a beer at the 2018 festival

Volunteers

I am pleased to say the final two of our first aiders passed their tests, so the First Aid Team is now fully complete, but hopefully, they will not actually be called upon to practice their newly acquired skills! In addition, we now have a full complement of festival volunteers for the various day-to-day operations. All festival volunteers will be sent their respective duty rotas in early July. They will also be notified of any induction arrangements. Thanks to everyone who has volunteered.

Catering

Unfortunately, due to circumstances beyond our control, the caterer we advised you about in the April e-Newsletter has now pulled out. However, I am pleased to say that we quickly found a supplier ready to step in. Inspired by Mediterranean cuisine, our new caterer will offer grilled burgers and wraps, with good vegetarian options and interesting sides.

Beer & Cider Pricing

To get the right pricing for our beers is always a difficult balance, but the average price of a pint at our Festival will be below £4 and a small number of 'premium ales' will be priced at £4. Dividing the beers by ABV%, prices will be in three bands: £3.60 / £1.80 / £1.20; £3.80 / £1.90 / £1.30; £4.00 / £2.00 / £1.40. Cider pricing will follow a similar pattern, but no 1/3 pints will be served.

Sponsorship

The sponsorship is doing extremely well. As such, the number of adverts to print in our brochure has now reached healthy levels. We originally thought only an 8-page brochure would be needed, but the early draft now stands at 14 pages, and we should be able to make at least 20. As well as being available at our Festival, we plan to upload a copy on the [Branch website](#) for you to download at the start of the festival week.

Thursday 28 July to Saturday 30th July 2022
12:00 – 22:30 (23:00 Friday)
Beckenham Rugby Football Club
Balmoral Avenue, Elmers End, BR3 3RD



Tutored Beer Tasting



This will be the final e-Newsletter reminder you will read regarding our special Des De Moor beer tasting session. This is your opportunity to be given six beers to drink in a unique tutored tasting session and is remarkable value at £6 online or £7.50 at the door. They are selling fast. Get your advance tickets [here](#) before they all go! Don't forget you can also buy your entry tickets and beer token vouchers online as well.



I look forward to seeing you all at the festival on the 28th - 30th July. I'm sure you will all have a great time and enjoy some marvellous beers & ciders, as well as good company.

Charles Tucker, Festival Coordinator

Our Festival Supporters

We would like to express our deep gratitude to the following sponsors, advertisers, and partners without whose help this Festival could not have happened:

- * Adnams
- * The Blythe Hill Tavern, Forest Hill
- * The Bricklayers Arms, Beckenham
- * The Broken Drum, Bexley
- * Broomfields Bar and Kitchen
- * The Chancery, Beckenham
- * The Chelsfield, Chelsfield
- * The Cockpit, Chislehurst
- * The Crown, Sundridge
- * The Greyhound, Keston
- * Five Points Brewing Co
- * The Jolly Woodman, Beckenham
- * The Lock & Barrel, Bromley
- * Orpington Liberal Club
- * The One Inn The Wood, Petts Wood
- * Pavilion Sports & Leisure Club
- * The Queen's Head, Downe
- * The Real Ale Way, Hayes & West Wickham
- * Southey Brewing
- * The Star & Garter, Bromley.
- * The Three Hounds, Beckenham.
- * Three Sods Brewery
- * Cannon Cars, Beckenham
- * EnergyMyWay
- * BPM Property Maintenance Ltd
- * GLEMNET Cloud Communication Solutions
- * Anthony Glockling
- * Tinklin Springhall Solicitors



Murray Mackay

The banners are up!

A big thank you to the [Bricklayers Arms](#) in Beckenham and the [Toby Carvery](#) at Eden Park for allowing Bromley CAMRA to once again advertise the festival in very prominent locations.



Chislehurst

This month, our BR7 Pub Contact, Alan Hunt, looks at four of the pubs in his area.

Much of the suburb of Chislehurst surrounds Chislehurst Common, a large area of woodland, grass and ponds; however the common is dissected by numerous roads.

Chislehurst's pubs are mostly grouped together, in three separate locations, towards the station (three pubs); near the War Memorial (four); close to the pond (two); plus one other by Scadbury Park. The pubs range from traditional 'wet-led locals' to more upmarket and food-focussed, with the most recent addition being a micropub.

Most of the pubs have large areas of outdoor seating, and several overlook parts of the common. It would be very easy to spend a very pleasant summer's day visiting several pubs, all connected by walking through the common.

Here, Alan focusses on just four of the pubs, however all ten are well worth visiting. The other pubs are listed on page [8](#).



The pond, on the Common, adjacent to the Queens Head.

Imperial Arms

The **Imperial Arms** is an outstanding gastropub, bistro and function room. The pub was refurbished to a very high standard by family member, interior designer Martyn Lawrence Bullard, and is featured in his TV programme *Million Dollar Decorators*.



Imperial Arms

Old Hill
BR7 5LZ

[WhatPub](#); [Website](#); [Twitter](#)



The pub is cosy, warm and inviting with two bars and dates back to 1787. Inside, the pub has the Library Bar and the Catherine Bar, named after the Mistress of Napoleon III, who stayed here when he was exiled to Chislehurst in 1870. The Bistro is housed in the original coach house in the grounds of the walled courtyard garden; this room is available to hire for functions, as well as being a restaurant.

Three cask ales are normally available, including Harvey's Sussex Best Bitter and Fuller's London Pride.

The pub is close to Chislehurst Caves, steeped in history and well worth a visit, maybe followed by lunch in the Imperial Arms!

Chislehurst Caves.

Dating back more than 8,000 years, the labyrinth of man-made tunnels was originally mined for flint and lime. Visitors can enjoy a guided lamp-lit tour of the dark passageways, which cover more than six hectares, 30 metres below the woodlands above.

www.chislehurst-caves.co.uk

For other attractions in Chislehurst, see www.visitchislehurst.org.uk

Queens Head



Queens Head

2 High Street
BR7 5AN

[WhatPub:](#)
[Pub website:](#)
[Twitter](#)



The **Queens Head** is one of the four Ember Inns in Bromley. It is located at the top of the High St, adjacent to Chislehurst Ponds. It is a large and imposing building, but inside is quite modern and painted in light colours. There are several different seating areas within the pub and food is a big part of its trade.

There is large beer garden overlooking the nearby pond.

It is rumoured that the pub is also haunted by three ghosts, so maybe keep your eyes peeled for Grace the cellar ghost, the man in the rocking chair, and the child on the stairs!

As an Ember Inn, this pub offers all ales at £2.99 all day on Mondays and Thursdays. A CAMRA member discount given on all other days. The range of ales varies, on my recent visit Adnam's Ghost Ship and St Austell Tribute were available.

Crown Inn

The **Crown Inn** is one of the few pubs in Bromley which offers hotel accommodation.

This Shepherd Neame pub dates from 1874. Ales available normally include Master Brew, Spitfire and Whitstable Bay, plus a full restaurant menu.

The pub directly overlooks Chislehurst Common, with the original 'Cock pit' just across road

The pub has a large rear beer yard and a function room. There is also occasional live music (see Facebook for details).



Crown Inn
School Road
BR7 5PQ

[WhatPub](#)
[Pub website](#)
[Facebook](#)



Cockpit

Chislehurst's newest pub is the **Cockpit micropub**, which opened in December 2020, in the midst of the pandemic.

Unusually, and perhaps uniquely, this pub shares its premise with a florist's shop. There is an outside seating area at the front, in what had been parking bays prior to the pandemic. Several adjacent restaurants and cafés have also created outdoor seating areas, the combined effect of which has been to transform what had been a characterless line of parked vehicles into a vibrant area to be enjoyed by residents and visitors.

Up to seven cask ales are served by gravity from a cold room, which can be viewed from the bar. The house beer is brewed by Brithop.

The pub has already proved to be a firm favourite with local residents.



Cockpit

4 Royal Parade
BR7 6NR

[WhatPub](#) [Facebook](#)



*Alan Hunt, Area Pub Contact for BR7.
(Plus some additional information by the Editor)*

The other pubs of Chislehurst

In total, there are **ten pubs** in Chislehurst selling real ale. In addition to those featured above, there are also the following:

Towards the station:

- [Bickley Arms](#)
- [Rambler's Rest](#)

Near the War Memorial / Cock Pit

- [Tigers Head](#)
- [Bull's Head Hotel](#)

Not far from the Pond / High St.

- [Gordon Arms](#)

Near Scadbury Park

- [Sydney Arms](#)

Visit Chislehurst with Bromley CAMRA

On **Tuesday 5th July**, there is an afternoon social in Chislehurst:

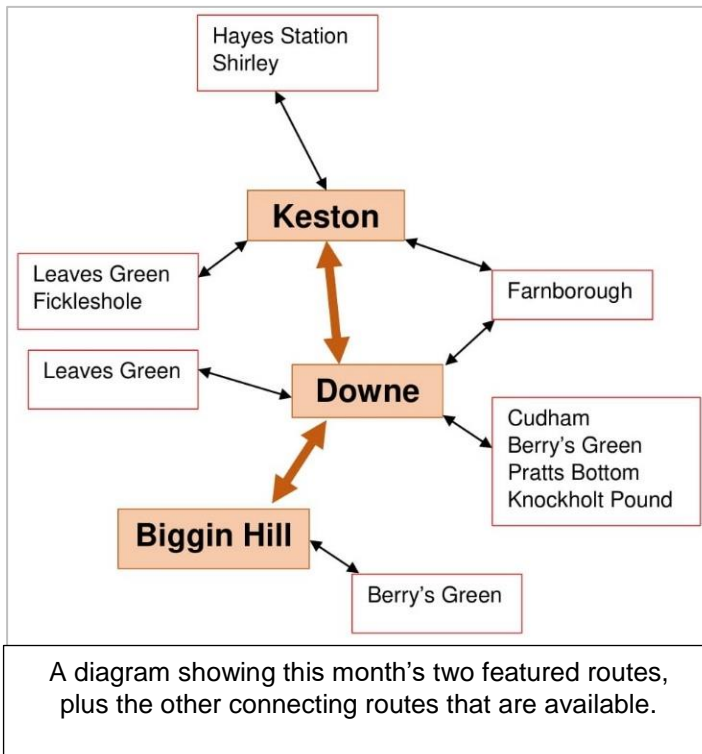


- 14:00 - [Rambler's Rest](#), Mill Place. BR7 5ND
- 15:00 - [Imperial Arms](#), Old Hill. BR7 5LZ

The July Bromley Pub Walk

Each month during spring and summer, as part of CAMRA's celebration of **Summer of Pub**, we will be featuring one or more of the Bromley Pub Walk routes. This month, it's the routes between Biggin Hill and Keston, via Downe.

This month's featured walk takes us past two significant local landmarks, Charles Darwin's Down House and the Wilberforce Oak. It also gives you a chance to stop for a drink at not just one, but two, former Bromley CAMRA Pubs of the Year.



The routes could be walked in either direction, depending in which pub(s) you wish to enjoy your post-walk drink(s), or you could just stop or start in Downe Village.

As with all the **Bromley Pub Walks** routes, other routes may be added to your walk, to suit your mood / stamina / thirst.

This month's featured routes are:

- [No 4, Keston / Downe](#), approx. 2.5 miles
- [No 15, Biggin Hill / Downe](#), approx. 2 miles

Full information, including public transport and a list of the pubs, is contained in the route guides, which can be downloaded via the links above.



Two previous Bromley CAMRA Pubs of the Year. Greyhound (2017) and Queen's Head (2014)



There will be more **Bromley Pub Walk** routes featured in the next issue of the e-Newsletter.

All the Bromley Pub Walk routes can be viewed on the Bromley CAMRA [website](#).

Good Beer Guide Pub of the Month

Continuing our series looking at the ten Bromley venues listed in the 2022 Good Beer Guide, this month our Branch Treasurer visits the Greyhound in Keston Village.

The **Greyhound** is a wonderful large country pub situated in a picturesque location in Keston. It has a beer garden to the front and rear of the pub as well as the Common directly opposite, adding to the special feeling of space you enjoy as you sup a pint!

This month Dave and Toni Lee will be celebrating running the pub for 14 years, so why not visit and celebrate this great achievement with them? The Greyhound is a warm welcoming family and dog-friendly pub, which is also popular with walkers and cyclists, as there are many excellent walks and trails in the surrounding area, which cry out for a rehydration stop, either on route, or after the walk or ride.

The core team at the Greyhound have now worked with Dave and Toni for over 10 years and their experience is demonstrated in the warm welcome you receive when you arrive at the pub. Dave is passionate about real pubs, something which is clearly evident when you talk with him about pubs and beers.

The Covid closures were a huge challenge for the entire pub sector and Dave told me that, heartbreakingly, 4,000 pints had to be thrown away when they had to close during the three lockdowns. The Greyhound was a recipient of a *Bromley CAMRA Lockdown Hero Award* in recognition of the huge transition and effort that the pub had to go through during this challenging period.

Some of the recent guest ales at the Greyhound:

- Big Smoke, Solaris
- Vocation, Bread and Butter
- Beatnikz, 2am Poet
- Brew York, Calmer Chameleon
- Salt, Centennial
- Anarchy, Blonde Star
- Leigh on Sea, 6 Little Ships

The Greyhound

Commonside
Keston. BR2 6BP
01689 856338

- [WhatPub](#)
- [Website](#)
- [Twitter](#)



The Greyhound overlooks the Common

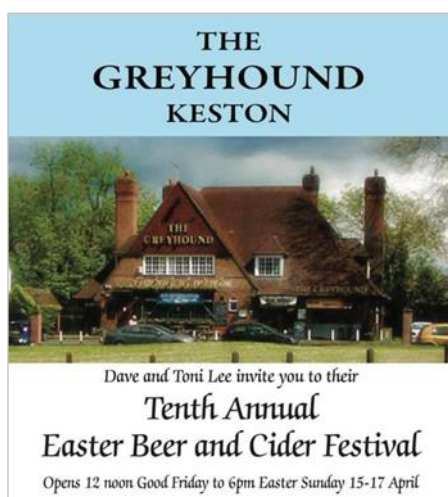
I was delighted to see that the pub is now back better than ever, and the focus has been shifted towards offering a large range of tasty food. It compliments the traditional wet sales with many people still popping into enjoy a pint of real ale from the regularly changing hand pumps. Regular cask ales include Timothy Taylor Landlord and Sharp's Doom Bar. In addition there is also a kaleidoscope of rotating guest ales, mostly from microbreweries, to compliment the regular beers.

The Greyhound offers a CAMRA discount on production of your valid membership card. Also the pub offers one real ale at £2.95 every Monday (but with no additional discount). I enjoyed a few pints of Purity Mad Goose on my recent visit.



The Greyhound has been listed in eight recent editions of the Good Beer Guide:

2013, 2016-2022



The pub's Easter Beer & Cider Festivals are legendary, and are always well supported with a wide range of interesting beers and real ciders on offer, all available as $\frac{1}{3}$, $\frac{1}{2}$, or pints. The festival made a very welcome return in 2022 with 15 cask ales and 8 ciders available.

The pub provides a community space for many different celebrations and gatherings and also hosts a very popular Oas Boss Reggae and Ska event each year which showcases the diversity of the Greyhound.

Murray Mackay



The stillage in the bar for the Easter 2022 beer festival. Eight ales were served on gravity from the stillage, with the other festival ales by handpump at the main bar.



The Greyhound, during the Jubilee celebrations

Another of Bromley's Good Beer Guide pubs will be featured in the next issue of the e-Newsletter.

Walking to/from The Greyhound

On [page 9](#) we featured the Bromley Pub Walks routes linking Keston with Biggin Hill via Downe.

In total there are currently six [Bromley Pub Walks](#) routes to/from Keston:

- 01 to Hayes Station
- 02 to Leaves Green via Nash
- 03 to Leaves Green via Wilberforce Oak
- 04 to Downe
- 05 to Farnborough
- 63 to Fickleshole



Local Pub, Club, Brewery News.

A round-up of news from some of Bromley Branch's Area Pub/Club Contacts, Brewery Liaison Officers and others.

Chelsfield, BR6.

Bromley CAMRA kicked off the *Summer of Pub* season on Saturday 11th June, with a walk in pleasant sunshine to Chelsfield village. Our first visit was to the [Five Bells](#), where a special award was presented to licensees Kay and Ade Stone by the local Pub/Club Contact - Norman Warner.



Barry Phillips

Ade and Kay at the Five Bells, Chelsfield.

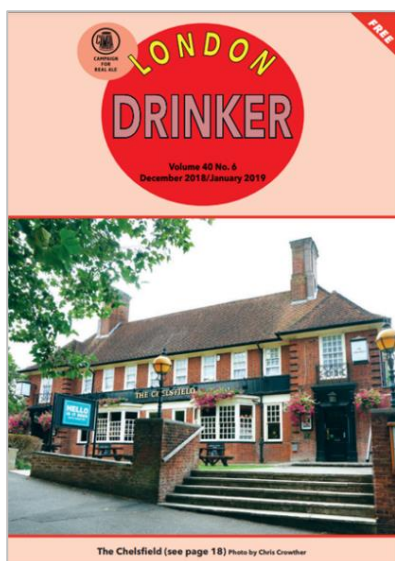
Kay and Ade have been running this Great British pub for 17 years, during which time they developed it into an outstanding pub, with a total of 14 Good Beer Guide entries, it was also local branch Pub of the Year 2010. In late June they handed over to Sam, the former chef, whilst they take a well-earned 'gap year'. Apparently, we should not use the 'R word', so I won't mention Retirement. However, whatever they do, we all wish them well.



About 12 members had gathered in the pub to wish them farewell, and to enjoy some excellent food and a fine selection of four cask ales, Butcombe Original; Skinner's Betty Stoggs; Timothy Taylor Boltmaker; plus Doom Bar.

Award ceremony over, most of the group then walked across fields to the nearby [Bo-Peep](#) for a refreshing pint in their lovely garden. Beers available here were Craft Beer Man Pale Ale, (a LocAle, from nearby Knockholt), and Adnams 'Bo-Peep House Ale'. The final stage continued with walking through yet more fields, to the final destination, the [Chelsfield](#) pub, where some excellent Purity Mad Goose, Timothy Taylor Landlord and Doom Bar awaited. We were also very pleased to be joined at this pub by our former Pub Protection Officer, Bryan Gannon, who is making steady progress in fighting his illness.

Norman Warner, Area Pub/Club Contact BR6



The Chelsfield

In 2018/19 [The Chelsfield](#) was under threat of demolition and redevelopment.

The 'Save the Chelsfield' campaign group was set up by local residents and 'regulars' at the pub, with support from Bromley CAMRA and the local Councillors.

The Planning Application was rejected by Bromley Council and the subsequent appeal by the developers was then rejected by the Planning Inspectorate. In 2019, Asset of Community Value status was granted by Bromley Council.

The pub is now managed by Punch Pub Partnership, and was tastefully refurbished in 2021. Two regular beers are normally available, Timothy Taylor Landlord and Doom Bar, plus a varying guest ale.

CAMRA News

The Branch Secretary also runs through some of the national and regional news from CAMRA.

To pub garden or not pub garden, that is the question. First hot and dry, then thunder and lightning, then hot and dry etc. Makes it very difficult to plan which pub to go to! The one with the garden, or the one with the nice interior. But aren't we lucky to have such choices?

Despite the vagaries of the weather, I hope you had an enjoyable Royal Jubilee weekend and, with many pubs planning further outdoor events over the next couple of months – what next for you?

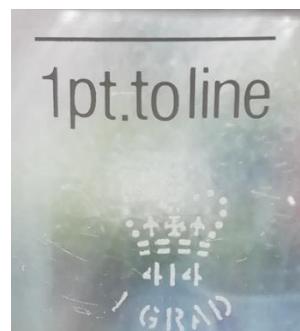
On a more national view, what has happened with CAMRA this month?

Make mine a pint!

Do you like your beer with a thick creamy head or not? (I don't, but each to their own!). If served in such a manner, have you ever looked and thought – that head takes up quite a bit of the glass? Well CAMRA has told the Government to "Make mine a pint" as HM Gov: looks to change weights and measures laws, with an argument that the return of the Crown mark on pint glasses should be matched with a change in the law to ensure that you, the drinker, always gets a full pint of beer at the bar!

Did you know, for instance, that a pint of beer is not presently defined in law as being 100 % liquid, meaning there is a possible short change of liquid unless the beer is in an oversize glass!

This follows the Government press release on 3 June and the issue of a consultation document on how to implement a change to the law on weights and measures. For more on this and sight of the CAMRA letter to the Business Minister, Paul Scully MP. Follow [this link](#) for more information.



CAMRA raises its glasses to its volunteers

Just so you know, CAMRA is entirely volunteer led, yes, all the work done on this newsletter, our social media and annual beer festival etc is carried on entirely by us volunteers! To say thank you to this dedicated bunch of individuals, during volunteer's week (1 - 7th June), CAMRA bought a round of drinks for a branch which had gone above and beyond to reform activity as normal after the pandemic which saw so much of our day-to-day activities grind to a halt! Sadly your branch did not get the award!

For more on the volunteering commentary (and please do bear in mind that your Bromley branch is always looking for more assistance) see this [press release](#) of 1st June.

Books to read

As readers of this newsletter may realise, I cannot resist a plug for a CAMRA book, so I am pleased to let you know that Laura Hadland's book, **50 Years of CAMRA**, has been named Best Beer Book in the World at the 2022 Gourmand Awards!

The awards, founded in 1995, celebrate food and drink books from 215 countries and regions each year. The ceremony took place in Umeå, Sweden, with Laura's book beating other finalists from Sweden, Canada and Argentina.

50 Years of CAMRA tells the living history of one of the UK's most colourful campaigns – from its roots, established by four young men from the North West keen to protect cask conditioned ale, to the organisation that has changed the face of the beer industry today.



To celebrate Laura's win, CAMRA is offering **free postage and packaging** on all books in the CAMRA shop. You can find out more [here](#).



CAMRA Podcasts – Pubs Pints and People

This series of podcasts continue with, during June, a feature on celebratory brews in recognition of the Platinum Jubilee weekend. This included our hosts looking at some of the celebratory events of the weekend. Click [here](#) for more on the podcasts.

The Great British Beer Festival (GBBF)

Another plug for CAMRA's London festival at Olympia on 2nd to 6th August.

Now it is the turn of the Cask Marque, which is urging its 80,000 ale-trailers to make this an unmissable stop in the beer exploration travels this Summer. Cask Marque is best known for the seal of approval it provides to pubs that offer great quality cask ale, (you will have seen their signage in your local), but it has also developed a highly popular [CaskFinder App](#), allowing beer lovers to take part in the 'World's Biggest Ale Trail'.



In summary, I can do no better than quoting from the Cask Marque [press release](#): *'The Great British Beer Festival is the only place in the world where beer lovers can find up to a thousand different real ales, cider and perries from across the UK and beyond. It is also the sole destination for US cask beers – a rarity in the States themselves – as part of a cask beer exchange with the New England Real Ale Exhibition (NEREX)'*. So, there you have it!

Whilst writing about GBBF, do not forget the Homebrew competition which debuts at this year's GBBF. I mentioned this in a previous newsletter, but the closing date for entries is rapidly approaching with homebrewers having until the 15th July to brew and enter their chosen beer, after which point a preliminary stage of judging will take place before the finals at the festival. The entry fee is just £10 and more information is available [here](#).

Pub extra curriculum



Shock horror, whatever next? Well, as many of you will appreciate, many pubs support their local clubs and societies through fundraising and provision of rooms.

In recognition, 'Creative Lives' with CAMRA support has developed an action-packed event to help publicans across England, which was held on 28th June.

Now, at the time of writing, I cannot know if this event has been a success but, however, if you are friendly with your local publican, perhaps see if they were aware and if not, mention the objectives of the group:

- Reinvigorate their pub following the pandemic
- Further establish their pub as the hub of the community
- Help to expand their customer base
- Create a buzz in the pub during traditionally quieter times

Anything helps! More information about this is [here](#).

And finally...

Have a great July. I hope that the storms of June now make way for more continued sunshine and ale drinking!

Kent Sadler, Branch Secretary.

The July Quiz

This month's quiz is on general knowledge.

- 1) What would be mounted onto a pan and tilt head?
- 2) What in North American slang is a 'Potsy' to a police officer?
- 3) In the Bible, who was the wife of Uriah?
- 4) What is the colour of the central stripe of the flag of Chad?
- 5) Which modern British city was known by the Romans as 'Magnus Portus'?
- 6) How many months are there in the Hindu calendar?
- 7) Which occurred first in geological time, the Permian or Cambrian periods?
- 8) In which city is the Islamic shrine the Kaaba?
- 9) What might you do with a Cervelat?
- 10) What type of foodstuff is a Red Savina Habanero?

Martin Gee, Quizmaster

The answers to the quiz are at the foot of this page.

Contacting Bromley CAMRA

- Website: bromley.camra.org.uk/
- Twitter: twitter.com/CAMRAbromley/
- Facebook: facebook.com/bromleycamra/

General enquiries about the branch should be sent to: branch.contact@bromley.camra.org.uk

All officers of the branch can be contacted direct by email, full details can be found on the branch website: <https://bromley.camra.org.uk/about-us/contact-us/>

The August Newsletter will be published on **1st August 2022**

The deadlines for the next issue are:

Features 10th July
News items 26th July

You can contact the editor by email: newsletter.editor@bromley.camra.org.uk.

The views expressed in this newsletter are those of their individual authors and are not necessarily endorsed by the editor or CAMRA.

Quiz answers:

1) A film camera; 2) A police officer's badge; 3) Bathsheba; 4) Yellow; 5) Portsmouth; 6) 12; 7) Cambrian period; 8) Mecca; 9) Eat it (it's a smoked sausage); 10) Chilli Pepper



Thursday 28 July to Saturday 30th July 2022

12:00 – 22:30 (23:00 Friday)

Beckenham Rugby Football Club

Balmoral Avenue, Elmers End, BR3 3RD

- 55 real ales
- 20 ciders / perries
- Hot & cold food
- Patio & lounge seating
- Club bar open for wines, spirits, soft drinks
- Special Tasting Event & book signing on Thursday
- Festival entry per day £3 online & £4 at the door - bargain 3-day £7 online
- Free festival entry for CAMRA members & age under 26
- Special 6-beer tasting event with Des De Moor £6 ticket online, £7.50 at door
- Payment for beer & cider at the festival by 10p tokens only
- Buy £10 beer & cider voucher online - exchange for 100 x 10p tokens at festival
- Join CAMRA at the Festival for two free pints of beer or cider



ONLINE TICKET SALES FROM 8TH APRIL

<https://tckty.camra.org.uk/e/44/bromley-camras-beer-and-cider-festival>



- 10-mins walk from Elmers End Train Station / Tram Stop
- Buses 54, 194, 358, 367 stop 2-mins away at Eden Park Avenue



@CAMRAbromley



@bromleycamra



bromley.camra.org.uk