

# CAMRA Bromley Branch

## e-Newsletter

### October 2022



#### In this issue:

##### [Branch Calendar](#)

A variety of social events and meetings are planned for October.

##### [The Good Beer Guide, and Beer Scoring](#)

A reminder about why we need your Beer Scores.

##### [The October Bromley Pub Walk](#)

This month's walking is around Pratts Bottom.

##### [A Beckenham Green Hop Beer](#)

September was the month to pick hops and to brew a green hop beer.

##### [Local Pub, Club & Brewery news](#)

News from some of the pubs and breweries in our area.

##### [CAMRA News](#)

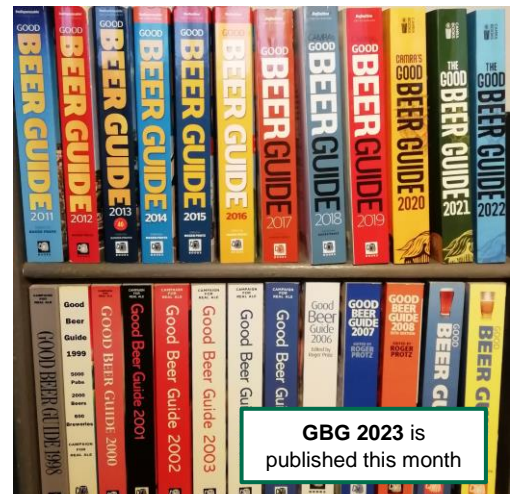
The Branch Secretary runs through some of the news from CAMRA.

##### [Beckenham Beer Festival 2023](#)

We need to appoint the Festival Coordinator for the 2023 festival. Could that be you?

##### [The October Quiz](#)

This month's quiz is about the Royal Family.



GBG 2023 is published this month



Bromley Pub Walk of the Month



Fresh local hops for a green hop beer

The Bromley Branch e-Newsletter is published every month, on approx. the first day of the month.

The e-Newsletter is designed to be read online, so that you can click on links to view all of the many linked documents.

Members who have 'opted in' to receive emails from the branch will receive an email to notify them when each newsletter is available to download from the Branch Website.

# Branch Calendar, October 2022

Full details of all events, including suggested public transport options, can be viewed on the branch website: <https://bromley.camra.org.uk/calendar/>

## Sat 8<sup>th</sup>. Social at Spa Valley Railway Beer Festival.

- Meet Orpington Station for the train to Tunbridge Wells (arr. 11:13) and socialise at West Station.
- More information about the festival [via this link](#).

This social has had to be cancelled due to a rail strike.  
(The festival is still taking place, see page 12)

## Thu 13<sup>th</sup>. Beer Festival Social.

- 19:30. [Orpington Liberal Club](#), 7 Station Rd, Orpington. BR6 0RZ

## Tue 18<sup>th</sup>. Evening in Beckenham

- 19:00. [Three Hounds Beer Company](#), 57 Beckenham Rd, Beckenham. BR3 4PR
- Includes presentation of the **Beer of the Festival award**
- 20:20: [Bricklayers Arms](#), 237 High St, Beckenham. BR3 1BN.

## Mon 24<sup>th</sup>. Committee Meeting and Social. (\*)

- 18:30. Pre-meeting social at [Jolly Woodman](#), 9 Chancery Ln, Beckenham. BR3 6NR
- 19:30. Committee Meeting. [Chancery](#), 90 Bromley Rd, Beckenham. BR3 5NP.

## Fri 28<sup>th</sup>. Day trip to Beer Festival Marden Village Club

- From 12:15. [Marden Village Club](#), Albion Rd, TN12 9DT.
- See below for details suggested travel arrangements



## Marden Village Club Beer Festival

- Albion Rd, Marden, Kent. TN12 9DT
- *The club is the 2022 CAMRA Kent Regional Club of the Year*
- To join the Bromley CAMRA visit to the festival, meet at Orpington Station for the 11:13 train to Marden, (change at Sevenoaks) arriving at Marden at 12:04

(\*) Members of Bromley CAMRA who are not on the committee are always welcome to attend committee meetings.

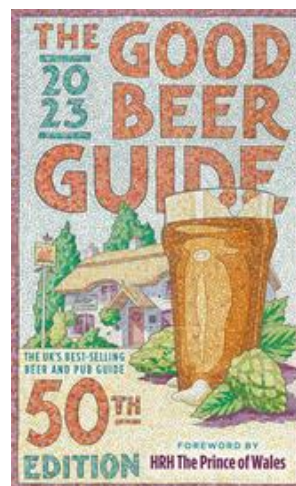
Non-committee members planning to attend a meeting may request the Secretary [secretary@bromley.camra.org.uk](mailto:secretary@bromley.camra.org.uk) to prepare and print a pack of relevant committee papers to be made available for them at the meeting.

## The Good Beer Guide, and Beer Scoring

Later this month will see the publication of the 50th edition of CAMRA's flagship publication, the Good Beer Guide. Here is a brief reminder about how Bromley CAMRA selects pubs and clubs for the GBG, and why it is essential that as many members as possible submit their beer scores to us.

The fiftieth edition of the Good Beer Guide (GBG 2023) will be published on **27<sup>th</sup> October**. If you have not already ordered your copy from CAMRA, you can do so [via this link](#). (Your Member login is required to obtain the members' discount.)

Bromley CAMRA uses **Beer Scores** to identify pubs and clubs for possible inclusion in the Good Beer Guide (GBG). Without sufficient scores, from enough members, throughout the year, no pub or club can be considered for the GBG.



Submit Beer Scores

\* fields are required

Date of visit: \*

23 / 09 / 2022

Score (0-5): \*

e.g. 3.5 (required)

Brewery: (optional)

southey

Beer: (optional)

Pale

[Show advanced options](#)

Bromley CAMRA has been using Beer Scoring as part of our GBG selection process since the branch relaunched in 2011, and we normally receive several thousand scores each year. All valid scores are taken into account when the 'long-list' is prepared for the annual GBG-Selection meeting (usually held in January). All members of the branch are welcome to attend and vote at the GBG Selection meeting. The date of the meeting to select pubs/clubs for the 51<sup>st</sup> edition of the guide will be announced shortly.

Unfortunately, we are now not receiving as many scores as we did in the years prior to the various Covid restrictions. **We therefore need to get more scores, from as many members as possible**, for the remainder of this year.

It's very easy to submit scores, either using [WhatPub](#), or via the [GBG App](#).

The recommended scoring scale is as follows, and all members are asked to submit their scoring on this basis:

<b>0</b>	<b>No cask ale</b> available	
<b>1</b>	<b>Poor.</b>	Beer is anything from barely drinkable, to drinkable with considerable resentment.
<b>2</b>	<b>Average.</b>	Competently kept, drinkable pint but doesn't inspire in any way, not worth moving to another pub, but you drink the beer without really noticing.
<b>3</b>	<b>Good.</b>	Good beer in good form. You may cancel plans to move to the next pub. You want to stay for another pint and may seek out the beer again
<b>4</b>	<b>Very Good.</b>	Excellent beer in excellent condition. You stay put!
<b>5</b>	<b>Perfect.</b>	Probably the best you are ever likely to find. A seasoned drinker will award this score very rarely.

*(Please note that 'half' scores may also be submitted, eg 0.5 for 'undrinkable', 1.5, 2.5, 3.5 etc)*

Here are a few tips to follow when you are scoring your beers:

- Scores should only be submitted for **cask beers** (by handpump or gravity) and genuine **real cider**. Any scores submitted for keg, key-keg or bottled beers/ciders will be have to be deleted.
- Scoring should be based on the **condition** of the beer/cider, and not on your personal preference about the beer **style**.

*Continues...*

- Please note the **national guidance**, as above, about high scores. If you do think that a beer warrants a score higher than **4**, please add a note to your score to tell us why it was so good.
- Also, if the beer is particularly **disappointing**, please add a note about that too; we need to know if there are quality problems at any pub or club. All Beer Scores received are regularly monitored throughout the year, so this is a quick and easy way to notify us of any issues with beer quality.

You can read more about Beer Scoring on the Bromley CAMRA [website](#).

*Bob Keaveney, Beer Score Coordinator*

<p><b>We need your Beer Scores</b></p> <p>Bromley CAMRA uses beer scoring to identify pubs/clubs for possible inclusion in the Good Beer Guide.</p> <p>Beer scoring is quick and simple using <a href="#">WhatPub</a> or the <a href="#">GBG App</a></p>	<p><b>WHAT?PUB</b></p> <p>National Beer Scoring System</p> <p>Please see the branch website for more information about Beer Scoring</p>
--	---

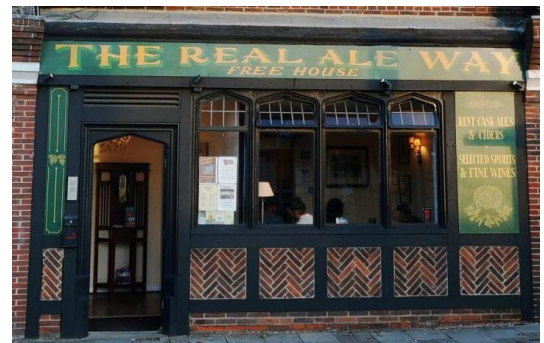
## 2022 Good Beer Guide Pub of the Month

Each month during this year, we have been featuring one of the ten Bromley pubs/club which were listed in the 2022 GBG.

This month, we had intended to publish the final feature in this series, however unfortunately that has not been possible. We hope to be able to report on this pub in a future issue.

**Real Ale Way**  
55 Station Approach,  
Hayes. BR2 7EB

[WhatPub](#)  
[Facebook](#)  
[Website](#)

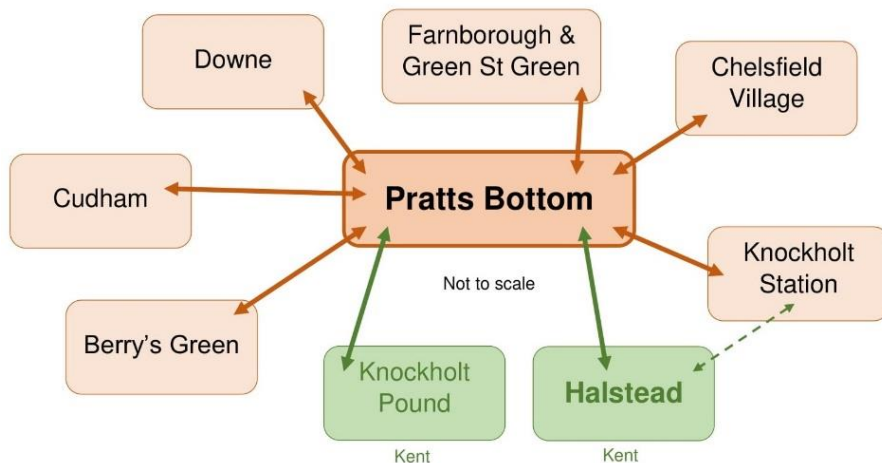


Photos by Chris Crowther, Charles Tucker & Editor

## The October Bromley Pub Walk

Throughout the summer, we have been featuring one or more of the Bromley Pub Walk routes in the e-Newsletter. This month, in the final of the current series, we look at the walking routes around Pratts Bottom, and we also venture over the Kent border to Halstead.

Just off the busy A21, Pratts Bottom is one of the several villages in the rural south of Bromley. There are currently eight *Bromley Pub Walks* routes which start or finish in Pratts Bottom.



- 10 to [Farnborough](#)
- 12 to [Downe](#)
- 19 to [Cudham](#)
- 20 to [Green St Green](#)
- 24 to [Chelsfield Village](#)
- 25 to [Knockholt Station](#)
- 33 to [Berry's Green](#)
- 51 to [Halstead](#)
- 53 to [Knockholt Pound](#)

In the centre of Pratts Bottom village, overlooking the green, is the **Bulls Head**:



**Bulls Head**  
Rushmore Hill  
Pratts Bottom  
BR6 7NQ  
01689 639233

- [WhatPub](#)
- [Facebook](#)



In addition to the **33** walking routes within Bromley, the *Bromley Pub Walks* also include a number of routes which go ‘just over the borders’, into neighbouring boroughs (and CAMRA branch areas). This currently includes six routes that go to pubs in the Kent villages of Halstead and Knockholt Pound. Both villages have two pubs, including a Good Beer Guide regular, the **Rose & Crown** in Halstead:



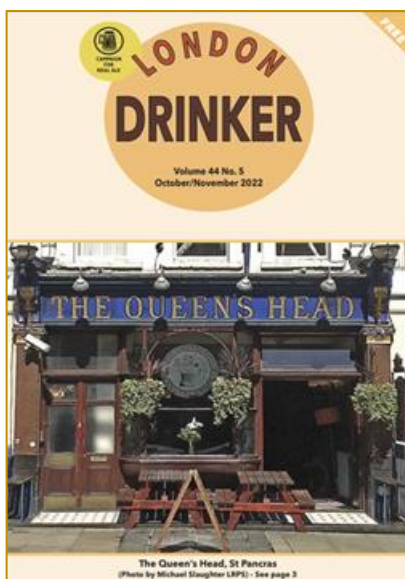
**Rose & Crown**  
 Otford Lane  
 Halstead  
 TN14 7EA  
 01959 533120

- [WhatPub](#)
- [Facebook](#)

Also in Halstead is the [Cock Inn](#),  
 Shoreham Lane. TN14 7DD



All the Bromley Pub Walk routes can be viewed on the Bromley CAMRA [branch website](#).



## London Drinker

The October/November issue will start to be distributed to pubs/clubs over the next few days.

The online version can be viewed [here](#).

The printed version can be viewed or downloaded [via this link](#).

## A Beckenham Green Hop Beer

*Our Branch Chair, and home brewing expert, Charles Tucker has brewed a green hop beer, using hops picked from the Editor's garden.*

Using 'green hops' to brew beers at this time of year has become a favourite amongst both amateur and professional brewers. But what are green hops? They are only available during the harvest period in late September as they are picked from the bine and used, ideally, within 36hrs. The freshest hops allow brewers to brew craft beers that give completely different characteristics, flavours, and aromas.

Bob Keaveney, our e-Newsletter editor, provided the green hops for me and on 12th September we did a hop picking exercise of the *Cascade* and *Goldings* hops in his garden. Commercially-grown hops are usually used after drying in a kiln or oast house, so when using the moisture laden green hops, you have to use up to eight times the quantity. I did my green hop brew over the weekend of 17-18<sup>th</sup> September and it's currently fermenting nicely.



The recent announcement that the Jennings brewery in Cockermouth was closing prompted me to do a clone of one of their more well-known brews – Cocker Hoop. This is an award-winning golden bitter from an all-malt brew with *Golding* hops added at various stages to give a classic hop flavour and aroma. I used the recipe from Graham Wheeler's book '*Brew Your Own British Real Ale*' with some adjustment due to using *Cascade* green hops as well.

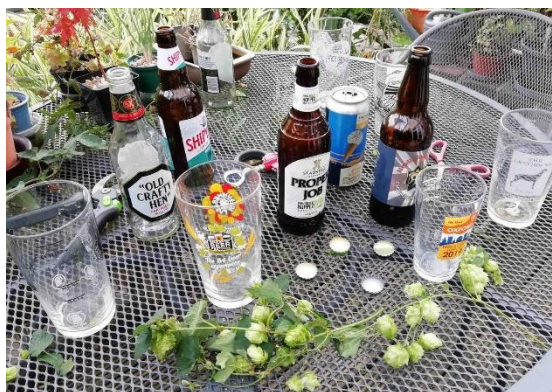
The total weight of wet hops used was 600g and the grain weight was 6.5kg for a 27L fermenter batch. Here are some photos of the picking and the process of brewing:



Of course, after the arduous work of hop picking was completed, some refreshment was necessary...

Below is a photo of the brew fermenting in my *Grainfather* fermenter, using my new *Grainfather* chiller – a marvellous bit of kit by the way.

I had a multiple brewing session while all my kit was set up, so the green hop is in the middle. To the left we have a robust smoked porter and to the right a clone of Sarah Hughes ruby mild.



All photos in this article are by Charles Tucker or the Editor



Hops drying in Charles's loft

There were far too many green hops for me to use in one go, so I am drying the remainder in my loft. I reckon that there will be about 300g dry weight.

All in all, it was a successful brew day, with more lovely hops left to use. I will be posting the actual recipe of the Cocker Hoop and more brewing pictures on my beer blog next week, so if you are interested, check from time to time at:

<https://beohhasbrewhouse.com/>.

Charles Tucker

### The Editor's hop growing. An update...

In the April to October 2020 Newsletters, during the first year of Covid-19, I reported on the growing and then harvesting of hops in my garden. Charles subsequently wrote about the beers that he brewed using those hops. You can view all the past issues of the newsletters on the [Bromley CAMRA website](#).

Hops are very vigorous, and tend to take over if not kept in check. My long-suffering neighbours are probably grateful that I have now disposed of the *Fuggles*, and relocated the *Target*, meaning that they no longer invade their gardens (or my bathroom).

However, our Branch Secretary has provided a new home for the *Fuggles*; I am therefore expecting soon to be hearing reports of Biggin Hill being overrun with hops...

Bob Keaveney



*Fuggles* growing in through the Editor's bathroom window



## Local Pub, Club & Brewery News

### BR1, Bromley

On 25<sup>th</sup> September, some of our members were fortunate to be able to enjoy a pint or two of the limited-edition cask version of Fuller's [Vintage Ale](#), in the [Partridge](#). (However, it will probably have all gone by the time you are reading this...)

Fuller's made the ale available in casks in a limited number of pubs as part of [Cask Ale Week](#).



Tim Wilding



Chris Crowther

### BR6, Orpington

The [Harvest Moon](#) closed its doors for the final time on 4<sup>th</sup> September. Whilst the pub perhaps might not have been of any great historic interest, it is still disappointing to see the loss of any pub, and the reduction in choice of pubs available for drinkers in Orpington.

It would appear that there are proposals for a large-scale redevelopment of the entire Walnuts Shopping Centre site. We understand that there is a local campaign opposing the redevelopment.

### SE20, Penge

The taproom at [Southey Brewing](#) reopened on 22<sup>nd</sup> September after a short period of closure for what they described as 'building and brewery upgrades'.

We've not yet had a chance to visit to check out the work (or to have a few beers).



### Local Brewery News

We understand that Rob, the brewer at [Mutineers](#), is now a dad for the second time, so we send him our congratulations. Obviously, this means that he is a bit short of time at the moment, however he will be sending two casks to the Spa Valley Beer Festival, one Filibuster and one Green Hop.

## CAMRA News

*The Branch Secretary runs through some of the national and regional news from CAMRA.*

Good grief, it's Autumn and the nights are now longer than days. The green hops are upon us, as are the various pumpkin-themed beers! What next - snow?

In writing up this note, it of course must be acknowledged that September has been one heck of a month. Seeing sadly the death of HRH Queen Elizabeth, a new Head of State and also a new PM and a new Chancellor.

As we wonder what the next few months will bring, what has been happening at CAMRA?

### The Pub Code.

CAMRA has been reviewing the [Pubs Code](#) for England and Wales. This originally came into force on 21<sup>st</sup> July 2016, however the review has raised serious concerns about its operation and effectiveness.

This follows research which found that most licensees with regulated tenancies do not feel that they are treated fairly and lawfully, nor that they are no worse off than a free of tie tenant – the two core principles that the Pubs Code was introduced to uphold. Follow [this link](#) for more on this and comment by CAMRA's Campaigns Director Nick Boley.

### Is your pub a good looking one?

The campaign is on the hunt for the very best examples of pub design for its prestigious Pub Design Awards, held in conjunction with Historic England.

The competition recognises the highest standards of architecture in the refurbishment and conservation of existing pubs as well as in the construction of new ones. They are judged by a panel of experts in design and conservation. Pubs can enter the award across five categories:

- *New Build* – which assesses newly built pubs, that can reflect the past or be completely modern
- *Conversion to Pub Use* – for outstanding conversions of buildings which were built for other purposes
- *Refurbishment* – which ranges from a complete gutting and replacement to enhancing the design of what was originally in the pub
- *Historic England Conservation* – sponsored by HE, this award is given for work which conserves what is good in the pub to ensure its future for generations
- *Community Local* – reserved for outstanding refurbished street-corner locals



(Top) Community Local, Winner: Boleyn Tavern, East Ham  
(And) Refurbishment Award, Highly Commended: Bleeding Wolf, Scholars Green,



Work must have been completed between 1<sup>st</sup> July 2021 and 30<sup>th</sup> June 2022.

Although open to pub owners and others involved in designing and refurbishing pubs, nominations are welcomed from CAMRA members and other pub-goers.

Follow [this link](#) for details of the current winners and those 'highly commended', and also for the nomination form for the 2023 awards. Nominations close on 13<sup>th</sup> November.

## Rugby and Beer (or if you prefer, Beer and Rugby Part 2).

Last month I reported on the GBBF lucky prize draw. Well, the winner was a David Kelly who secured £3,000 worth of sports travel vouchers redeemable through MSG tours.



Good luck to David (a big rugby fan) and we hope you enjoy your prize which can be used towards any rugby travel packages including the Six Nations, Dubai 7's and official travel packages to Rugby World Cup France. (My hope is that next year will be sponsored by the Motor Cycle press, as I would like to attend a couple of MotoGP events, or perhaps World Superbike, but if wishes were horses etc).

## The Jennings Brewery in Cumbria

Did you know that the Jennings brewery is being closed by its owners, Carlsberg Marston's Brewing Company? Well CAMRA does and has called upon CMBC to think again and commit to selling Jennings as a going concern.



## Podcasts

Some years ago, our branch held a social in the Shortlands Tavern allowing members to have a go at a number of pub games no longer practiced in our pubs. Sadly, attendance was very poor and we have not repeated. However, I am pleased to see that the latest episode of the CAMRA podcast is now shining a spotlight on pub games by speaking with two award winning writers – Emma Inch and Jane Peyton.

They examine the unique role of pub games in British pub history and how events such as a quiz night or skittles alley can help transform some of the quietest pub nights into a popular evening, bringing people together and breaking down social barriers.

Emma is quoted as saying *"The draw of a great array of games can revitalise a pub's quieter nights, whether that's a selection of board games, a pub quiz or an old classic such as Toad in the Hole. I hope that more pubs will take up the opportunity to bring in a new crowd, recruit some new regulars, and have some fun!"*



Now, as a bit of a collector of pub games, perhaps we can see a return of others including Bagatelle (in all its forms), shove 'appenny and table skittles – to name but a few! The podcast may be found [via this link](#).

And finally...

## The National Brewery Centre – Closure!

So, with the Carlsberg Marston's Brewing Company closing the Jennings Brewery, what could their arch rivals, Molson Coors, do to go one better? Well, why not close the [National Brewery Centre](#) at Burton upon Trent for starters?

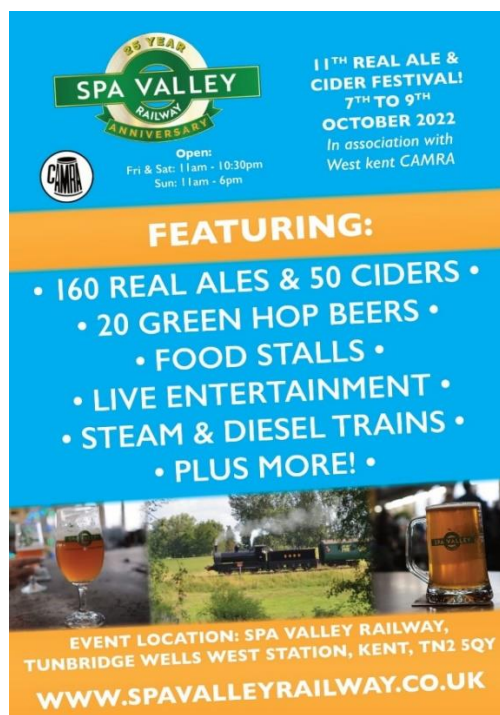
Believe it? You could not make it up!



CAMRA has responded, urging Molson Coors to reverse the decision and invest in the Centre in its current location; to ensure its collections are open and accessible to the public, adding that as one of the largest brewers in the world, it has a responsibility to safeguard historical and education facilities under its care.

I said it last month and will repeat, fingers crossed!

*Kent Sadler, Branch Secretary*



**Rail strike action on Saturday 8<sup>th</sup> October, a statement from the event organisers:**  
 "THIS EVENT WILL STILL GO AHEAD. We might not be able to operate to Eridge on Saturday 8<sup>th</sup> October, however, we will still operate there on Friday 7<sup>th</sup> and Sunday 9<sup>th</sup> October and both the bars at Tunbridge Wells West and Groombridge will be open from 11:00 to 23:00 on Saturday 8<sup>th</sup> October. Please keep an eye on [this page](#) for the latest information."

## We need a Beer Festival Coordinator for 2023

Unfortunately, our 2022 Festival Coordinator will not be able to take the role on for 2023, so we are looking for someone who has the suitable skills to take over.



Bromley CAMRA normally appoints the Festival Coordinator at the October or November meeting of the Committee. This is done to ensure the appointee has sufficient time to do their job before the following July; planning and preparation for festivals has to start many months before the actual event.

The role would suit someone who would like to use their organisational and planning skills leading a multi-faceted event. You will be helped by an established team of experienced CAMRA volunteers, all of whom have many years of festival experience behind them. Also, the outgoing Coordinator will be close at hand to give you the benefit of his acquired festival experience and knowledge. In addition, CAMRA has extensive information and resources regarding running beer festivals in its own online 'Festival Hub'.

The role is a challenging one, but very rewarding and gives you an amazing sense of achievement. For more details on the Role Description please check out [this link](#).

The outgoing Festival Coordinator will be happy to give you more information or arrange a chat with you. Email: [festival.coordinator@bromley.camra.org.uk](mailto:festival.coordinator@bromley.camra.org.uk).

## The October Quiz

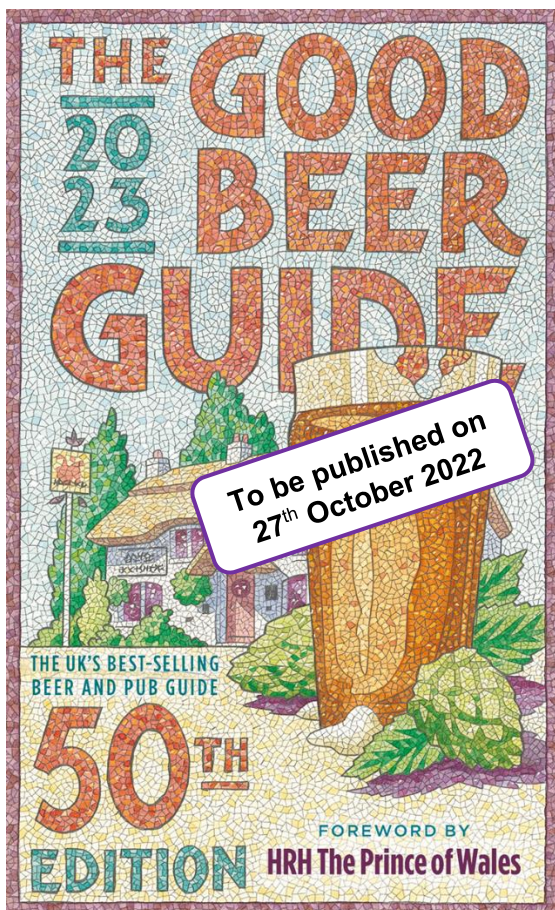
*This month's quiz is about The Royal Family.*



- 1) What country was Prince Phillip born in?
- 2) What are the names of Prince Charles' five grandchildren?
- 3) What is the royal family's real name?
- 4) Which British royal was known for being a rebel when they were young?
- 5) What were Queen Elizabeth's two middle names?
- 6) Who designed Princess Diana's wedding dress?
- 7) What breed of dog is commonly associated with Queen Elizabeth II?
- 8) What year did Prince Harry and Meghan Markle get married?
- 9) Which month of the year does Trooping the Colour normally take place in?
- 10) How did Prince William and Kate Middleton meet?
- 11) Who was the Queen Elizabeth II's oldest grandchild?
- 12) Which British Princess has a child named Sienna Elizabeth?
- 13) How old was Queen Elizabeth II when she became monarch?
- 14) Where do the royal family traditionally spend Christmas?
- 15) Which sport does Zara Tindall have an Olympic medal in?
- 16) Where did Queen Elizabeth II and Prince Phillip get married?
- 17) What hobby does Kate Middleton have?
- 18) How many grandchildren did Queen Elizabeth II have?
- 19) Which royal wedding had to be postponed due to the pandemic?
- 20) Where did Queen Elizabeth II and Prince Phillip live as newlyweds?

*Martin Gee, Quizmaster*

The answers to the quiz are at the foot of the next page.



## Pre-order with a member discount

You can pre-order your copy of  
*The Good Beer Guide 2023*  
RRP: £16.99

**Member price £14.99**

[Order here from CAMRA Books](#)

---

## Contacting Bromley CAMRA

- Website: [bromley.camra.org.uk/](http://bromley.camra.org.uk/)
- Twitter: [twitter.com/CAMRAbromley/](https://twitter.com/CAMRAbromley/)
- Facebook: [facebook.com/bromleycamra/](https://facebook.com/bromleycamra/)

General enquiries about the branch should be sent to: [branch.contact@bromley.camra.org.uk](mailto:branch.contact@bromley.camra.org.uk)

All officers of the branch can be contacted direct by email, full details can be found on the branch website: <https://bromley.camra.org.uk/about-us/contact-us/>

The October e-Newsletter will be published on **1<sup>st</sup> November 2022**

You can contact the editor by email: [newsletter.editor@bromley.camra.org.uk](mailto:newsletter.editor@bromley.camra.org.uk).

The views expressed in this newsletter are those of their individual authors and are not necessarily endorsed by the editor or CAMRA.

© 2022 Bromley CAMRA

Quiz answers:

- 1) Corfu, Greece;
- 2) George, Charlotte, Louis, Archie and Lilibet;
- 3) The House of Windsor;
- 4) Prince Harry;
- 5) Alexandra Mary;
- 6) Elizabeth and David Emanuel;
- 7) Corgis;
- 8) 2018;
- 9) June;
- 10) At university;
- 11) Peter Phillips;
- 12) Princess Beatrice;
- 13) 25;
- 14) Sandringham;
- 15) Equestrian;
- 16) Westminster Abbey, London;
- 17) Photography;
- 18) 8;
- 19) Princess Beatrice and Edoardo Mapelli Mozzi;
- 20) Clarence House